

COLD WATER PRESSURE WASHER

BD INDUSTRIAL SERIES

W/AUTO STOP/START - COMPLETE SHUTDOWN



PERFECT FOR CLEANING

- Manufacturing
- Trucking
- Automotive
- Restaurants
- Food Processing
- Farm & Ag. Industry
- Veterinarian Clinics
- Industrial Applications
- Wash Bays

WHY CHOOSE ALKOTA

There is no reason that machines need to be complicated to do their job.

Our team of engineers and product developers have been designing, building and improving high pressure cleaning systems since 1964. When you buy an **Alkota** pressure washer, you're buying quality and longevity. It is an investment in the future of your business.

At **Alkota** we believe that simplicity means quality.

Being American owned our machines are built with high quality materials the old-fashioned way, by hand. We design and assemble them right here in the heart of the **USA**, so that you know you're getting an American-built machine.



BD INDUSTRIAL SERIES SPECIFICATION CHART

MODEL	216BD	311BD	320BD	420BD	430BD	518BD	530BD
Capacity	2.0 GPM	3.0 GPM	3.0 GPM	3.5 GPM	4.0 GPM	5.0 GPM	5.0 GPM
Pressure	1600 PSI	1100 PSI	2000 PSI	2000 PSI	3000 PSI	1800 PSI	3000 PSI
HP	2.3	2.3	4	5	8	6	10
Voltage	115V, 1 PH, 20 Amp	115V, 1 PH, 20 Amp	230V, 1 PH, 20	230V, 1 PH, 22 Amp	230V, 1 PH, 32 Amp	230V, 1 PH, 24 Amp	230V, 3 PH, 25 Amp
Pump	GP	GP	GP	GP	GP	GP	GP
Hose	3/8" x 50'	3/8" x 50'	3/8" x 50'	3/8" x 50'	3/8" x 50'	3/8" x 50'	3/8" x 50'
Wand	Trigger	Trigger	Trigger	Trigger	Trigger	Trigger	Trigger
Chemical	Metered	Metered	Metered	Metered	Metered	Metered	Metered
Drive	Belt	Belt	Belt	Belt	Belt	Belt	Belt
Weight	230 lbs.	230 lbs.	230 lbs.	330 lbs.	325 lbs.	330 lbs.	325 lbs.
Dimensions	23 1/2" L x 30" W x 17" H	23 1/2" L x 30" W x 17" H	23 1/2" L x 30" W x 17" H	23 1/2" L x 30" W x 17" H	23 1/2" L x 30" W x 17" H	23 1/2" L x 30" W x 17" H	25" L x 35" W x 17" H



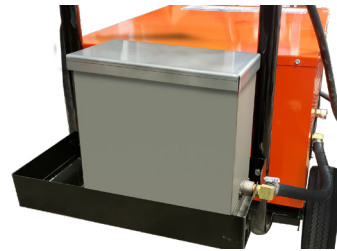
4 Wheel Cart



Tool Box Available on 4 wheel cart only



Photo Inside Model 530BD



Optional Float Tank
*Float Tank only available on cart unit.



Wall Mount Bracket

Float Tank Part Numbers

- 216BD-00121
- 311BD-00121
- 320BD-00121
- 420BD-00121
- 430BD-00121
- 518BD-00121
- 530BD-00121

Note: Float Tank & Tool Box cannot be combined together.

Standard Features

- Belt Drive Ceramic Plunger Pump
- External Mount Unloader
- Push Button Lighted Switch
- Shut Off Gun w/Variable Pressure Wand
- Down Stream Injector
- Smart Timer (Auto On/Off) W/30 Second Timer Delay
- Hour Meter
- Three nozzles 15°, 25° & 40°
- 140° F Standard Operating Temperature

Available Options

- 230 Volt Three Phase
- 460 Volt Three Phase
- Auto Shut Down Manual On/Off Adjustable Timer
- 4 Wheel Cart w/ Casters
- Float Tank w/High Pressure Soap
- Wall Mount Kit
- Stainless Steel Frame & Cover
- SS Cart
- 180° F - High Temp Pump Packings

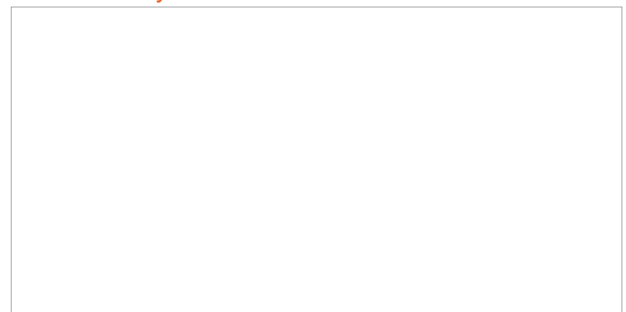
FOR BETTER CLEANING



Clean Better with **Alkota Biodegradable** detergents specially formulated for high pressure cleaning.

All Pressure washer detergents are blended with Scal Trol to reduce scale buildup in the heating coil, pump and fittings. This improves equipment performance and minimizes replacement and repair cost.

Distributed by:



Alkota Cleaning Systems Inc.
Alcester, South Dakota 57001

For more information call:
(800) 255-6823 / (605) 934-2222 or
Fax: (800) 325-5682 / (605) 934-1808
Web Access: www.alkota.com

CERTIFICATIONS



© 2022 Alkota Cleaning Systems
Specifications subject to change without notice
Printed in U.S.A. / Form #: ALK-BDI-1221