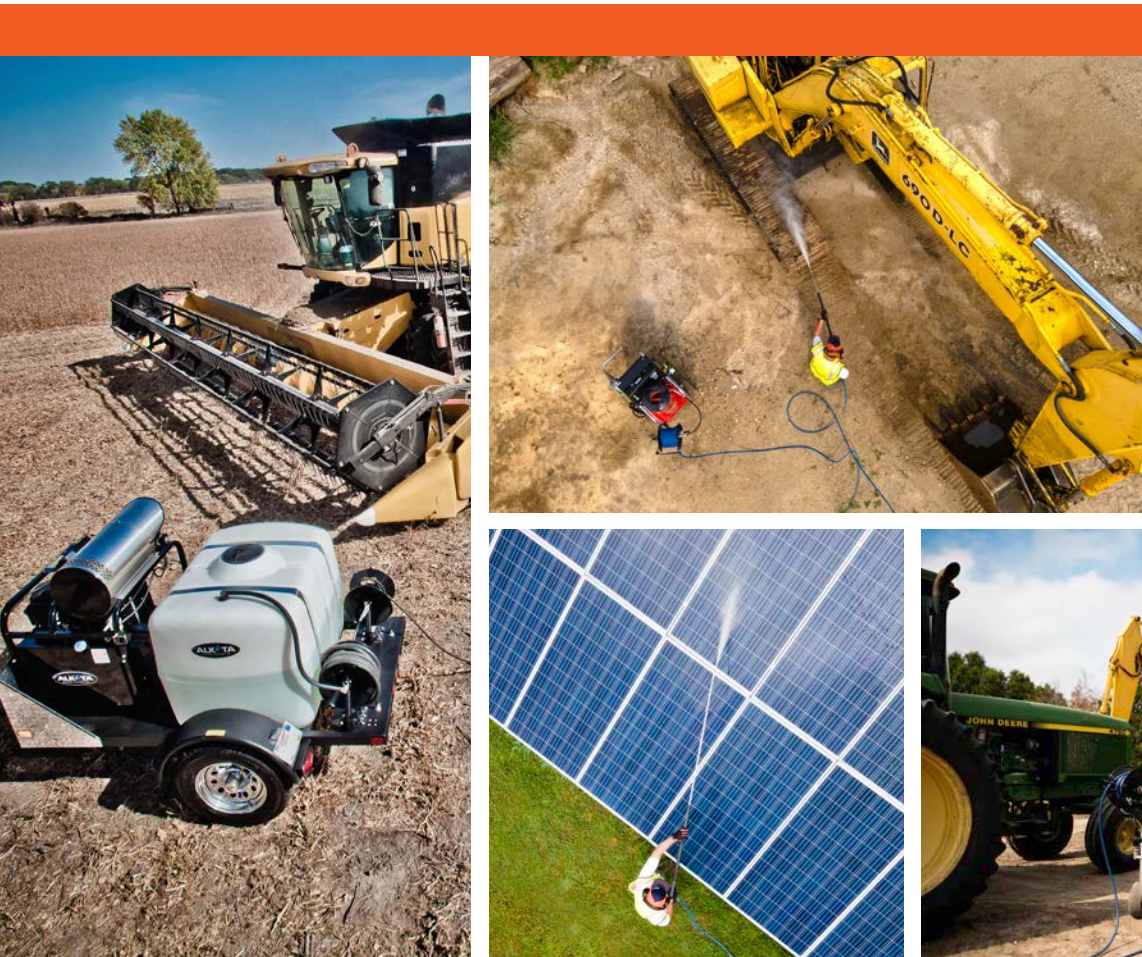


ALKOTA

C L E A N I N G S Y S T E M S










2025

ALKOTA

PRICE LIST

Effective March 15TH, 2025

TABLE OF CONTENTS

PAGE	03	ELITE	Elite Series
PAGE	05		Hot Water
PAGE	19		Steam Cleaners
PAGE	23		Water Heaters
PAGE	27		Cold Water
PAGE	39		Trailers
PAGE	43		Water Treatment
PAGE	48		Space Heater

NOTATIONS

- Gallonage and pressure may vary +/- 5% due to manufacturing tolerances in components.
- Gallonage and pressure may be less on 230V and 440V 3 PH current.
- All coils ASTM A-53 steel pipe, spiral wound, cold water wrap, removable.
- All combination kits must have a temperature control. If a unit does not feature a temperature control as standard, a control kit must be ordered.
- Special voltage, gallonage, pressure, and versions quoted on request.

SHIPPING POLICY

All orders will be treated independently for shipping. Because of order volume, we are not able to match multiple orders. If items must ship together, they must be on the same order. Once an order is placed, subsequent items cannot be added to the same order. For Alaska, Hawaii and international shipments, matching of multiple orders for weight requirements and minimizing customs charges will take place as requested. All drop ship, UPS Red, 2nd Day and International shipments are assumed to be "ship complete". If a Back order occurs on these express shipments, Alkota will make every effort to contact the distributor for instructions. If contact cannot be made, Alkota will ship the partial order and notify the distributor by email or voice message. Any back order that is incurred will ship UPS ground unless otherwise instructed. All costs incurred by Alkota for special services such as Specialized packaging, Expedited Service, Residential Delivery, Lift Gate Service, Redirects, Call in Advance for Appointment, etc. will be charged directly to the customer as incurred including handling fee. Alkota's goal is to ship product quickly and efficiently. For faster service, use orders@alkota.com or Fax @ 800-325-5682 to place all orders. Next Day orders received before 2:00 PM will be shipped the same day.

Place your order at orders@alkota.com

Specifications and Prices **Subject to Change Without Notice.**

Prices are FOB Alcester, South Dakota

ALKOTA ELITE Series

The **ELITE** line of Industrial-grade hot water pressure washers offers the best in **Alkota** equipment. All machines come standard with our most popular options, made in the **USA**, with best in class pricing. There is something for everyone, portable units, skid mounts, and, stationary pressure washers. No one matches **ALKOTA'S ELITE** Series quality, value, and, reputation. Don't settle, get the equipment that works as hard as you do, and get **Alkota** clean.



Part Number
216X-00Q000

MODEL 216X4

HOT WATER | Flat Free Wheels,
Temp and Solenoid

List Price

\$6,945.00

- 2 GPM at 1,600 PSI
- 2.3 HP 115V Electric Motor
- Belt Driven ETB1511
- Oil Fired with Fuel Solenoid*
- Temperature Control*
- 50' Hose, Wand, Gun & Nozzles



Part Number
420X-00Q100

MODEL 420X4

HOT WATER | Flat Free Wheels,
Temp and Solenoid

List Price

\$7,745.00

- 3.5 GPM at 2,000 PSI
- 5 HP 230V Electric Motor
- Belt Driven EP1813
- Oil Fired with Fuel Solenoid*
- Temperature Control*
- 50' Hose, Wand, Gun & Nozzles



Part Number
430XM-00Q010

MODEL 430XM

HOT WATER | Flat Free Wheels,
Temp and Solenoid

List Price

\$9,534.00

- 3.8 GPM at 3,000 PSI
- 8 HP 230V Electric Motor
- Belt Driven TSS1511
- Oil Fired with Fuel Solenoid*
- Temperature Control*
- 50' Hose, Wand, Gun & Nozzles

MODEL 4405XD4[†]

HOT WATER | Panel Mount Temp Controller

- 4 GPM at 4,000 PSI
- Honda GX390 Electric Start
- Direct Drive EZ4040G
- Oil Fired with Fuel Solenoid*
- Panel Mount Temperature Control* & Hour Meter
- 50' Hose, Wand, Gun & Nozzles

List Price

\$8,867.00

List Price

\$8,534.00

3 or more on a single
order & location

Part Number
4405XD-00P000



FOR MORE
ELITE INFO



SCAN HERE



Part Number
5357-SHT010

MODEL 5357C HOT WATER

List Price

\$22,220.00

- 4.7 GPM at 3,500 PSI
- Diesel Kubota Z602 Electric Start
- Belt Driven TSS1021
- Diesel Fired
- Temperature Control* & Hour Meter
- 100' Hose, Wand, Gun & Nozzles



Part Number
8405HNL-X00020

MODEL 8405HNL[†] HOT WATER

List Price

\$16,645.00

- 8 GPM at 4,000 PSI
- Honda GX800 Electric Start
- Belt Driven TSF2021
- Oil Fired
- Temperature Control* & Hour Meter
- 50' Hose, Wand, Gun & Nozzles



Part Number
4301D-00V01Z (NG)
4301D-50R01Z (LP)

MODEL 4301^{NG/LP} HOT WATER

List Price

\$12,443.00

- 4 GPM at 3,000 PSI
- 8 HP 230V Electric Motor
- Belt Driven TSS1511
- LP or Natural Gas Fired
- Smart Timer
- Electronic Ignition*
- Temperature Control* & Hour Meter
- 50' Hose, Wand, Gun & Nozzles
- UL and CSA Certifications



Part Number
5355J-000000

- 5 GPM at 3,500 PSI
- Honda GX630 Electric Start
- Belt Driven TSS1021
- Oil Fired
- Hour Meter
- 100' Hose, Wand, Gun & Nozzles

MODEL 5355J[†] HOT WATER

List Price

\$13,889.00

List Price

\$13,465.00

3 or more on a single
order & location

MODEL 5355ENS[†] HOT WATER

- 5 GPM at 3,500 PSI
- Vanguard 18HP with
- Electric Start
- Belt Driven TSS1021
- Oil Fired
- Temperature Control*
- & Hour Meter
- 100' Hose, Wand,
- Gun & Nozzles

List Price

\$11,778.00

List Price

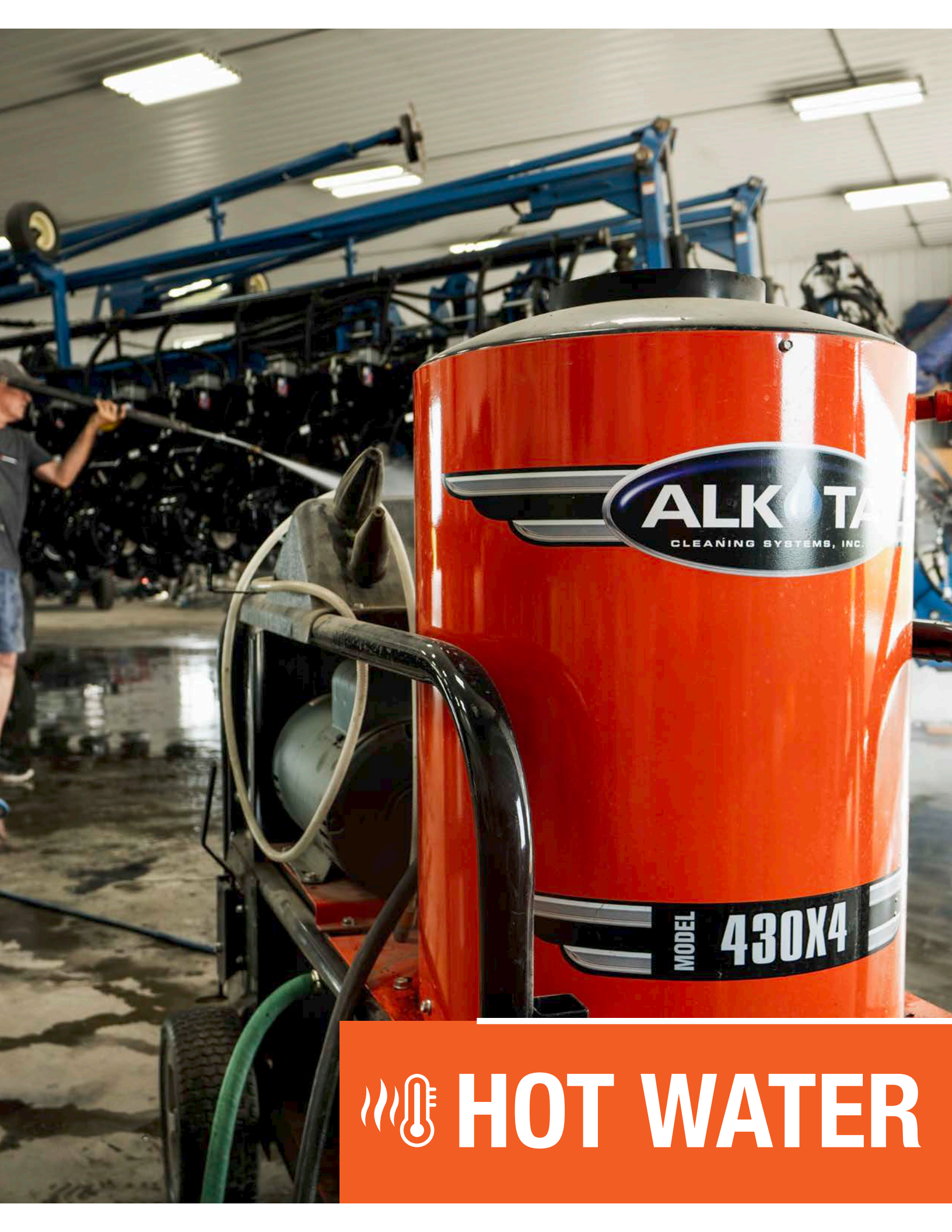
\$11,176.00

3 or more on a single
order & location



Part Number
5355ENS-X00020

No other discounts or promotions apply to this offer, no 5% government discount, or 5% 15-day payment. ELITE machines CANNOT be modified at Alkota with any other options; they will be sold as listed. The pricing on this offer is net 30-day terms only. For 3+ machine pricing – single location shipping only. For questions, please contact your Regional Sales Manager. Machines will be shipped immediately once completed, no holding of inventory. Pricing & components subject to change at manufactures discretion. *Feature Specific to ELITE version of model (not standard equipment). † Not for Sale in California.



HOT WATER

AX4 BELT DRIVE SERIES

Industrial Hot High Pressure Washers



Hot Water



Portable



Oil
Diesel/Kerosene



Electric Motor
w/ Belt Drive



AX4: Electric • Oil Fired • Portable • 4 Non-Flat Wheels • Belt Drive • Tri-Plex Pump • High-Efficiency Electric Motor • Non-Corrosive Float Tank • High-Pressure Detergent Application • Trigger Gun • 96' Coil • 15°, 25° and 40° Degree Nozzle • Hose Reel Mount Bracket

AX4 XTREME: Add These Xtreme Performance Features to the Already High Quality Ax4 Series: Stainless Steel Wrapper • Fuel Solenoid • High-Limit Switch • Black Color • 15°, 25° and 40° Degree Nozzle • Dakota Cool Bypass (Patent Pending) • Hose Reel Mount Bracket

UL Certification available on selected models with * Call Factory

MODEL	PERFORMANCE	COIL SIZE	BTU	POWER REQUIREMENT	HP	WT.	AX4		AX4 XTREAM	
							PART NUMBER	LIST	PART NUMBER	LIST
*216AX4	2.0 GPM / 1600 PSI	14"	175,000	115V 1 PH 20A	2.3 HP	420	216AX-000000	\$7,084.00	216AXX000000	\$7,582.00
*311AX4	3.0 GPM / 1100 PSI	14"	175,000	115V 1 PH 20A	2.3 HP	425	311AX-000000	\$7,084.00	311AXX000000	\$7,582.00
*320AX4	3.0 GPM / 2000 PSI	14"	175,000	220V 1 PH 20A	4 HP	420	320AX-000000	\$7,342.00	320AXX000000	\$8,020.00
420AX4	3.5 GPM / 2000 PSI	14"	350,000	230V 1 PH 30A	5 HP	470	420AX-0000W0	\$7,971.00	420AXX-0000W0	\$8,732.00

Note: 420AX4 is with Tall Coil

OPTIONS				
Additional for 127" coil (tall coil)	AX4	\$245.00	Pneumatic Wheels in Place of Non-Flat Wheels	N/C
	AX4 XTREME	\$321.00		
	Stainless Steel Frame	Call Factory		

X4 BELT DRIVE SERIES

Industrial Hot High Pressure Washers



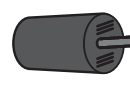
Hot Water



Portable



Oil
Diesel/Kerosene



Electric Motor
w/ Belt Drive



*Photo Shown Xtream Series
with Optional Caster Wheel Kit

X4 Series: Electric • Oil Fired • Portable • 4 Non-Flat wheels • Belt driven tri-plex pump • Non-corrosive float tank • High-pressure detergent application • Trigger gun • 15, 25 & 40 Degree nozzles • Standard Hose Reel Mount Bracket • Dakota Cool Bypass (Patent Pending)

X4 Xtreme Series: Stainless steel wrapper • Fuel solenoid • High-Limit Switch • 15, 25 & 40 Degree nozzles • Black color • Dakota Cool Bypass (Patent Pending) • Hose Reel Mount Bracket

UL Certification available on selected models with * Call Factory

MODEL	PERFORMANCE	COIL SIZE	BTU	POWER REQUIREMENT	HP	WT.	X4		X4 XTREAM	
							PART NUMBER	LIST	PART NUMBER	LIST
*216X4	2.0 GPM / 1600 PSI	14"	196,000	115V 1 PH 20A	2.3 HP	535	216X-000000	\$7,453.00	216XX-000000	\$8,479.00
*311X4	3.0 GPM / 1100 PSI	14"	273,000	115V 1 PH 20A	2.3 HP	535	311X-000000	\$7,453.00	311XX-000000	\$8,479.00
*320X4	3.0 GPM / 2000 PSI	14"	273,000	230V 1 PH 20A	4 HP	535	320X-000000	\$7,884.00	320XX-000000	\$8,829.00
*330X4	3.0 GPM / 3000 PSI	14"	273,000	230V 1 PH 30A	6 HP	555	330X-000000	\$9,165.00	330XX-000000	\$10,089.00

Continued on Next Page

Continued from Page 4

MODEL	PERFORMANCE	COIL SIZE	BTU	POWER REQUIREMENT	HP	WT.	X4		X4 XTREAM	
							PART NUMBER	LIST	PART NUMBER	LIST
*420X4	3.5 GPM / 2000 PSI	14"	350,000	230V 1 PH 30A	5 HP	545	420X-000000	\$8,311.00	420XX-000000	\$9,229.00
*423X4	3.7 GPM / 2300 PSI	18"	350,000	230V 1 PH 30A	6 HP	665	423X-000000	\$10,471.00	423XX-000000	\$11,479.00
425X4	3.5 GPM / 2500 PSI	14"	350,000	230V 1 PH 30A	6 HP	575	425X-000000	\$9,227.00	425XX-000000	\$10,159.00
430XM4	3.6 GPM / 3000 PSI	14"	350,000	230V 1 PH 40A	8 HP	625	430XM-000000	\$10,269.00	430XX-000000	\$11,309.00
*418X4	4.0 GPM / 1800 PSI	18"	350,000	230V 1 PH 30A	5 HP	615	418X-000000	\$9,486.00	418XX-000000	\$10,429.00
*430X4	4.0 GPM / 3000 PSI	18"	350,000	230V 1 PH 40A	8 HP	685	430X-000000	\$11,026.00	430XX-000000	\$12,059.00
*518X4	4.8 GPM / 1800 PSI	18"	540,000	230V 1 PH 30A	6 HP	665	518X-000000	\$10,693.00	518XX-000000	\$11,709.00
*523X4	4.8 GPM / 2300 PSI	18"	540,000	230V 1 PH 40A	8 HP	725	523X-000000	\$11,358.00	523XX-000000	\$12,439.00
*530X4	4.8 GPM / 3000 PSI	18"	540,000	230V 3 PH 30A	10 HP	745	530X-000000	\$12,319.00	530XX-000000	\$13,429.00
530X4	4.8 GPM / 3000 PSI	18"	540,000	230V 1 PH 50A	10 HP	745	530X-040000C	\$14,043.00	530XX-040000C	\$15,259.00

UL Certification available on selected models with * Call Factory

OPTIONS			
8" Draft Diverter (Z01-00099)	\$179.00	3 Phase Options – Oil Fired with Thermally Protected Motors (6 & 8 HP)	
Hour Meter (Factory Installed)	\$269.00	4 HP 208V-230V 3 PH in place of 1 PH	\$819.00
Pneumatic Wheels in place of Flat-Free Wheels	N/C	4 HP 460V 3 PH in place of 1 PH	\$919.00
Stainless Steel Options Available	Call Factory	5HP – 208-230V, 3 PH, upgrade to 6 HP	\$599.00
Steam Option w/Adjustable Temp. Control (Only available w/Tail Coil AX4)	\$1,089.00	5HP – 460V, 3 PH, upgrade to 6 HP	\$869.00
Economy Steam Option up to 250F (Only available w/ Tall Coil AX4)	\$499.00	208-230V, 3 PH (6 HP)	\$229.00
Adjustable Temperature Control Panel Mount	\$290.00	208-230V, 3 PH (8 HP) Upgrade to 10 HP	\$1,019.00
Adjustable Temperature Control w/ Fuel Solenoid	\$469.00	460V, 3 PH (8 HP) Upgrade to 10 HP	\$1,519.00
Stainless Steel Wrapper (14")	\$359.00	Smart Timer (Auto On / Auto Off 20 sec time delay w/adj. lockout timer) 230V	\$999.00
Stainless Steel Wrapper (18")	\$419.00	Smart Timer (Auto On / Auto Off 20 sec time delay w/adj. lockout) 460V	\$1,299.00
Rear Wheel Caster Kit 420X-99008 (for models X4 only) Installed	\$450.00	Auto Shutdown Timer (Manual On / Auto Off w/ adj. Omron timer)	\$1,499.00
Temp. Control in Place of High Limit On Extreme Model	\$219.00	530X4 - 10HP, 3PH	
High Limit Switch on standard X4 Model	\$149.00	208 V, 3 PH (10 HP)	\$150.00
Fuel Solenoid adder	\$199.00	460 V, 3 PH (10 HP)	\$979.00
Stainless Steel Frame	Call Factory		
1 Phase Options (2, 4, 5, 6, 8 & 10 HP)			
Smart Timer (Auto On / Auto Off 20 sec time delay w/adj. lockout timer) 2, 4, 5, 6 HP 8 & 10 HP	\$999.00		
Auto Shutdown Timer (Manual On / Auto Off w/ adj. Omron timer 2, 4, 5, 6 HP	\$1,229.00		
8 HP	\$1,379.00		
10 HP	\$1,689.00		



Model 4405XD4

XD4 GASOLINE ENGINE SERIES

Industrial Hot High Pressure Washers



Hot Water

Gas Engine w/
Electric StartOil
Diesel/Kerosene

Portable

Gasoline Oil Fired XD4 Series: Electric Start • Portable • Non Flat wheels • Direct drive EZ4040 • Down stream detergent application • Adjustable Temperature • Trigger gun • Schedule 80 coil • 15, 25 & 40 Degree nozzles • Stainless Steel power platform, wrapper and base • Standard Hose Reel Mount Bracket

MODEL	PERFORMANCE	COIL SIZE	BTU	TEMP. CONTROL	POWER SOURCE	DRIVE	WT.	PART NUMBER	LIST
ELITE *4405XD4	4 GPM / 4000 PSI	14"	350,000	Adjustable	GX390 HONDA ES	DD	570	4405XD-00P000	\$8,867.00
*4405XB4	4 GPM / 4000 PSI	14"	350,000	Adjustable	GX390 HONDA ES	BD	570	4405XB-00P000	\$11,759.00
4405XD4	4 GPM / 4000 PSI	14"	350,000	Adjustable	CH440 KOHLER ES	DD	570	4405XDK-00P000	\$10,999.00
4405XD4	4 GPM / 4000 PSI	14"	350,000	Adjustable	14 HP VANGUARD	DD	570	4405XDV-00P000	\$10,679.00
*3305XD4	3 GPM / 3000 PSI	14"	273,000	Adjustable	GX270 HONDA RECOIL	DD	470	3305XD-00P000	\$9,279.00

BD: Belt Drive DD: Direct Drive *Not Carb Compliant. **3305XD4 Short / 96' coil

OPTIONS

Rear Wheel Caster Kit 420X-99008 Installed

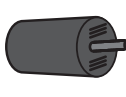
\$450.00

GAS FIRED ELECTRIC X4 SERIES

Industrial Hot High Pressure Washers



Hot Water

Gas
(LP & NG)Electric Motor
w/ Belt Drive

Portable

Gas Fired X4 Series: Electric • LP Fired • Portable • 4 Non-Flat wheels • Belt drive tri-plex pump • High-efficiency electric motor • Non-corrosive float tank • High-pressure detergent application • Trigger gun • Schedule 80 coil • 15, 25 & 40 Degree nozzles • Electronic Ignition Standard

Gas Fired X4 Xtreme Series: Add these Xtreme Performance features to the already high quality X4 Series: • Stainless steel wrapper • High-Limit Switch • Black color in Place of Orange • 15, 25 & 40 Degree nozzles • Electronic Ignition Standard

Shown with Optional
Pneumatic Wheels

							GAS FIRED X4		GAS FIRED X4 XTREAM	
MODEL	PERFORMANCE	COIL SIZE	BTU	POWER REQUIREMENT	HP	WT.	PART NUMBER	LIST	PART NUMBER	LIST
216X4PT	2.0 GPM/1600 PSI	14"	240,000	115V 1 PH 20A	2.3 HP	535	216X-503000	\$9,189.00	216XX-503000	\$9,579.00
311X4PT	3.0 GPM/1100 PSI	14"	240,000	115V 1 PH 20A	2.3 HP	535	311X-503000	\$9,189.00	311XX-503000	\$9,579.00
320X4PT	3.0 GPM/2000 PSI	14"	240,000	230V 1 PH 20A	4 HP	535	320X-503000	\$9,359.00	320XX-503000	\$9,739.00
324X4PT	3.0 GPM/2400 PSI	14"	240,000	230V 1 PH 30A	5 HP	545	324X-503000	\$9,969.00	324XX-503000	\$10,349.00
330X4PT	3.0 GPM/3000 PSI	14"	240,000	230V 1 PH 30A	6 HP	545	330X-503000	\$10,709.00	330XX-503000	\$11,099.00

OPTIONS

LP bottle rack and clamp (I4202-99013)	\$589.00	Auto Shutdown Timer (Manual On / Auto Off w/ adj. timer)	\$1,229.00
Portability Kit—45 lb. LP bottle, rack, hose, regulator (I4202-99012A)	\$1,369.00	Adjustable Temperature Control	\$290.00
Pneumatic Wheels in place of Non-Flat Wheels	N/C	Stainless Steel Wrapper 14"	\$359.00
Smart Timer (Auto On / Auto Off 20 sec time delay w/ adj. lockout timer)	\$999.00	Stainless Steel Frame	Call Factory

XH4 BELT DRIVE SERIES

Industrial Hot High Pressure Washers



Hot Water



Oil
Diesel/Kerosene



Electric Motor
w/ Belt Drive



Portable

XH4 Belt Drive Series: Electric • Oil Fired • Portable • Non-Flat Wheels • Belt Drive tri-plex pump • High efficiency electric motor • Non-corrosive float tank • High Pressure detergent application • Trigger Gun • 15, 25 & 40 Degree nozzles • Schedule 80 coil • Hour Meter • Painted Orange Wrapper & Panels • Dakota Cool Bypass (Patent Pending)

XH4 Xtreme Series Electric: Fuel Solenoid • Adjustable Thermostat • Dakota Cool Bypass (Patent Pending) • Non Flat Wheels • Stainless Steel Wrapper with Black Panels



Xtream Series Model

MODEL	PERFORMANCE	COIL SIZE	BTU	POWER REQUIREMENT	HP	WT.	XH4		XH4 XTREAM	
							PART NUMBER	LIST	PART NUMBER	LIST
216XH4	2 GPM/1600 PSI	14"	196,000	115V 1 PH 20A	2.3 HP	535	216XH-000000	\$8,369.00	216XH-000000	\$8,769.00
311XH4	3 GPM/1100 PSI	14"	273,000	115V 1 PH 20A	2.3 HP	535	311XH-000000	\$8,369.00	311XH-000000	\$8,769.00
320XH4	3 GPM/2000 PSI	14"	273,000	230V 1 PH 20A	4 HP	535	320XH-000000	\$8,719.00	320XH-000000	\$9,129.00
324XH4	3 GPM/2400 PSI	14"	273,000	230V 1 PH 30A	5 HP	545	324XH-000000	\$9,279.00	324XH-000000	\$9,719.00
330XH4	3 GPM/3000 PSI	14"	273,000	230V 1 PH 30A	6 HP	555	330XH-000000	\$9,979.00	330XH-000000	\$10,449.00
418XH4	4 GPM/1800 PSI	14"	350,000	230V 1 PH 30A	5 HP	615	418XH-000000	\$9,249.00	418XH-000000	\$9,689.00
420XH4	3.5 GPM/2000 PSI	14"	350,000	230V 1 PH 30A	5 HP	545	420XH-000000	\$9,249.00	420XH-000000	\$9,689.00
425XH4	3.5 GPM/2500 PSI	14"	350,000	230V 1 PH 30A	6 HP	575	425XH-000000	\$10,039.00	425XH-000000	\$10,519.00
430XH4	3.9 GPM/3000 PSI	14"	350,000	230V 1 PH 40A	8 HP	685	430XH-000000	\$11,359.00	430XH-000000	\$11,889.00

OPTIONS

Stainless Steel Coil Wrapper	\$299.00	Rear Wheel Caster Kit 420X-99008 Installed	\$450.00
Pneumatic Wheels in place of Non-Flat Wheels	N/C	Smart Timer (Auto ON/Auto OFF 20 Sec. Timer Delay w/Adjustable Lock Timer)	\$999.00
Adjustable Temp. Control w/ Fuel Solenoid (Included in Xtream Series)	\$469.00		

XH4 DIRECT DRIVE GASOLINE ENGINE SERIES

Industrial Hot High Pressure Washers



Hot Water



Gas Engine w/
Electric Start



Oil
Diesel/Kerosene



Portable

Gasoline Oil Fired XH4 Series: Electric Start • Portable • Non Flat wheels • Direct drive EZ4035 • Down stream detergent application • Adjustable Temperature • Trigger gun • Schedule 80 coil • 15, 25 & 40 Degree nozzles and Stainless Steel Coil wrapper • Hour Meter

*** Not Carb Compliant.**



Model
3405XHH

MODEL	PERFORMANCE	COIL SIZE	BTU	TEMP. CONTROL	POWER REQUIREMENT	WT.	PART NUMBER	LIST
3405XHH	3.5 GPM / 4000 PSI	14"	196,000	Adjustable	GX390 HONDA ES	470	3405XHH-000020	\$9,819.00
3405XH	3.5 GPM / 4000 PSI	14"	196,000	Adjustable	CH440 KOHLER ES	470	3405XH-000020	\$9,819.00
3405XHX	3.5 GPM / 4000 PSI	14"	196,000	Adjustable	14 HP VANGUARD ES	470	3405XHX-000020	\$9,619.00

OPTIONS

Rear Wheel Caster Kit 420X-99008 Installed	\$450.00
--	-----------------



GAS FIRED SERIES

ETL Certified to UL-60335-1, -60335-2 -79 and CSA



Hot Water



Stationary



Gas
(LP & NG)



Belt Drive

LP or Natural Gas Electric • Stationary • Belt Drive Tri-plex Pump • High-Efficiency Electric Motor • Non-Corrosive Float Tank • High-Pressure Detergent Application • Trigger Gun • 15, 25 & 40 Degree Nozzles • Auto ignition, Auto Smart timer Std. and Remote Ready Standard on All Models • Adjustable Panel Mount Temperature Control and Hour Meter Included.

DRAFT DIVERter NO LONGER INCLUDED.

MODEL	PERFORMANCE	COIL SIZE	STACK	BTU	POWER REQUIREMENT	HP	WT.	NATURAL GAS		LP GAS	
								PART NUMBER	LIST	PART NUMBER	LIST
2161AEUL	2.1 GPM / 1600 PSI	14"	10"	235,000	115V 1 PH 20A	2.3 HP	600	2161D-00V01Z	\$12,269.00	2161D-50R01Z	\$12,269.00
3111AEUL	3.0 GPM / 1100 PSI	14"	10"	365,000	115V 1 PH 20A	2.3 HP	600	3111D-00V01Z	\$12,269.00	3111D-50R01Z	\$12,269.00
3201AEUL	3.0 GPM / 2000 PSI	14"	10"	365,000	230V 1 PH 20A	4 HP	610	3201D-00V01Z	\$12,669.00	3201D-50R01Z	\$12,669.00
3241AEUL	3.0 GPM / 2400 PSI	14"	10"	365,000	230V 1 PH 30A	5 HP	615	3241D-00V01Z	\$13,149.00	3241D-50R01Z	\$13,149.00
3301AEUL	3.0 GPM / 3000 PSI	14"	10"	365,000	230V 1 PH 30A	6 HP	630	3301D-00V01Z	\$14,159.00	3301D-50R01Z	\$14,159.00
4181AEUL	4.0 GPM / 1800 PSI	18"	12"	365,000	230V 1 PH 30A	5 HP	700	4181D-00V01Z	\$13,019.00	4181D-50R01Z	\$13,019.00
4201AEUL	3.6 GPM / 2000 PSI	14"	10"	365,000	230V 1 PH 30A	5 HP	615	4201D-00V01Z	\$12,619.00	4201D-50R01Z	\$12,619.00
4231AEUL	3.7 GPM / 2300 PSI	18"	12"	365,000	230V 1 PH 30A	6 HP	800	4231D-00V01Z	\$13,239.00	4231D-50R01Z	\$13,239.00
ELITE 4301AEUL	4.0 GPM / 3000 PSI	18"	12"	365,000	230V 1 PH 40A	8 HP	810	4301D-00V01Z	\$12,443.00	4301D-50R01Z	\$12,443.00
† 4301AEUL	4.0 GPM / 3000 PSI	18"	12"	365,000	230V 1 PH 40A	8 HP	810	4301D-00V01Z	\$13,769.00	4301D-50R01Z	\$13,769.00
5181AEUL	5.0 GPM / 1800 PSI	18"	12"	440,000	230V 1 PH 30A	6 HP	800	5181D-00V01Z	\$13,439.00	5181D-50R01Z	\$13,439.00
5231AEUL	5.0 GPM / 2300 PSI	18"	12"	440,000	230V 1 PH 40A	8 HP	825	5231D-00V01Z	\$14,189.00	5231D-50R01Z	\$14,189.00
5301AEUL	5.0 GPM / 3000 PSI	18"	12"	440,000	230V 3 PH 30A	10 HP	860	5301D-00V01Z	\$14,849.00	5301D-50R01Z	\$14,849.00
5301AEUL	5.0 GPM / 3000 PSI	18"	12"	440,000	230V 1 PH 50A	10 HP	880	5301D-04V01Z	\$15,749.00	5301D-54R01Z	\$15,749.00
5401AEUL	5.0 GPM / 4000 PSI	18"	12"	440,000	230V 3 PH 40A	15 HP	885	5401D-00V01Z	\$19,309.00	5401D-50R01Z	\$19,309.00
5501AEUL	5.0 GPM / 5000 PSI	18"	12"	440,000	230V 3 PH 50A	20 HP	960	5501D-00V01Z	\$26,179.00	5501D-50R01Z	\$26,179.00
*6231AEUL	6.0 GPM / 2300 PSI	18"	12"	440,000	230V 1 PH 50A	10 HP	1390	6231D-04V00Z	\$16,947.00	6231D-54R00Z	\$16,947.00
*7201AEUL	7.0 GPM / 2000 PSI	24"	12"	660,000	230V 1 PH 50A	10 HP	1390	7201D-04V00Z	\$20,799.00	7201D-54R00Z	\$20,799.00
7301AEUL	7.0 GPM / 3000 PSI	24"	12"	660,000	230V 3 PH 40A	15 HP	1390	7301D-00V01Z	\$23,049.00	7301D-50R01Z	\$23,049.00
8251AEUL	8.0 GPM / 2500 PSI	24"	12"	660,000	230V 3 PH 40A	15 HP	1385	8251D-00V01Z	\$23,439.00	8251D-50R01Z	\$23,439.00
8351AEUL	8.0 GPM / 3500 PSI	24"	12"	660,000	230V 3 PH 50A	20 HP	1410	8351D-00V01Z	\$24,519.00	8351D-50R01Z	\$24,519.00
10201AEUL	10 GPM / 2000 PSI	30"	12"	880,000	230V 3 PH 40A	15 HP	1640	10201D-00V01Z	\$25,529.00	10201D-50R01Z	\$25,529.00
10301AEUL	10 GPM / 3000 PSI	30"	12"	880,000	230V 3 PH 50A	20HP	1710	10301D-00V01Z	\$25,889.00	10301D-50R01Z	\$25,889.00

† The 4301AEUL Elite is NOT customizable - the STANDARD 4301AEUL allows for customization.

* Not UL Certified

Continued on Next Page

Continued from Page 8

OPTIONS			
Stainless Steel coil & frame options available	Call Factory	Wireless Remote Control kit - On / Off Motor Burner & Detergent Transmitter & Receiver Included	\$3,019.00
Economy Steam up to 250° F	\$499.00	Additional Wireless Remote. Transmitter Only	\$609.00
Steam Option for all Models except 2-3 GPM models	\$1,069.00	Wall Mount Bracket for Wireless Remote	\$109.00
2-Gun System with Multi Unloader, Hose, Gun & Wand, 7 GPM and Up Models	\$550.00	3 Phase Options without Thermally Protected Motors	
Stainless Steel Wrapper (14")	\$359.00	5HP – 208-230 V, 460 V, 3 PH, upgrade to 6 HP.	\$639.00
Stainless Steel Wrapper (18")	\$419.00	6HP 208-230/3, 460 V, 3 PH (6 HP)	\$249.00
Stainless Steel Wrapper (24")	\$589.00	208-230 V, 3 PH (8 HP upgrade to 10 HP), 460V 3PH (8 HP upgrade to 10 HP)	\$409.00
Stainless Steel Wrapper (30")	\$849.00	208V, 3 PH (10 HP)	\$409.00
Draft Diverter 10" P/N Z01-00100	\$179.00	208V, 3 PH (15 HP)	\$349.00
Draft Diverter 12" P/N Z01-00101	\$263.00	208V, 3 PH (20)	\$1,049.00
Draft Diverter 12" in 10" Out P/N Z01-00101S	\$277.00	230 V 3 PH (4 HP) in Place of 1 PH	N/C
575V 3 PH	\$799.00	460V 3 PH (4 HP) in Place of 1 PH	\$269.00
REM-99067 Remote Control OFF/ON PUMP & BURNER - No Cord	\$460.00	Note: 15 & 20 HP 1 PH Not Available	
REM-99067-10 Remote with 10 Ft Cord	\$550.00	460V, 3PH (10, 15, 20 HP)	\$259.00
REM-99067-20 Remote with 20 Ft Cord	\$630.00	230V, 3 PH to 460V 3 PH on AEUL Models	N/C
REM-99067-30 Remote with 30 Ft Cord	\$710.00	Oil Fired in place of Gas Fired Fuel Tank Included	\$850.00
REM-99067-40 Remote with 40 Ft Cord	\$790.00	Fuel Tank 13 Gal (4-99171) Includes Fuel Tank 13 Gallons (18" & 14" Model)	Included
REM-99067-50 Remote with 50 Ft Cord	\$870.00	27 Gal (4301-99125) Includes Fuel Tank 27 Gallons (24" & 30" Model)	Included
REM-99067-60 Remote with 60 Ft Cord	\$950.00	Electronic Modulating Gas Valve System	\$3,999.00
REM-99067-80 Remote with 80 Ft Cord	\$1,030.00	Stainless Steel Frame	Call Factory
REM-99068 REMOTE CONTROL OFF/ON PUMP, BURNER & SOAP - No Cord - Requires Soap Solenoid	\$545.00	Hose Trolley Kit HTS-99000	\$1,296.00
REM-99068-10 Remote with 10 Ft Cord	\$640.00	SS Hose Trolley Kit HTS-99000-SS	\$1,895.00
REM-99068-20 Remote with 20 Ft Cord	\$725.00	Curtain Walls	Call Factory
REM-99068-30 Remote with 30 Ft Cord	\$810.00		
REM-99068-40 Remote with 40 Ft Cord	\$895.00		
REM-99068-50 Remote with 50 Ft Cord	\$980.00		
REM-99068-60 Remote with 60 Ft Cord	\$1,065.00		
REM-99068-80 Remote with 80 Ft Cord	\$1,150.00		
Note: Soap Solenoid must be added when ordering Remote with Soap	\$389.00		
Additional Soap Solenoid	\$297.00		
Digital Panel Mount Temp Control w/Sensor (110V, 220V)	\$669.00		
Auto Shutdown in place of Smart Timer	\$300.00		



Model 5355J



Model 8405HA



Model 5355JB

GED SKID SERIES

Self-contained Hot Water Pressure Washers



Hot Water

Oil
Diesel/KeroseneGas Engine w/
Electric Start

Portable with Wheel Kit or Skid Mount

Gas engine drive • Electric start • Oil Fired • Skid mount • Belt drive tri-plex pump • 15, 25 & 40 Degree nozzle • Stainless steel wrapper and control panel • 115 or 12 volt burner available • Non-corrosive float tank with 3-way valve • Black color Frame • 126' schedule 80 coil 14" • 337' Schedule 80 coil 24" • Group 24 Battery required on Electric Start

Not CARB compliant.

12 VOLT							
MODEL	PERFORMANCE	COIL SIZE	BTU	POWER SOURCE	WT.	PART NUMBER	LIST
5355EAD	5.0 GPM / 3500 PSI	14"	355,000	Vanguard 18 HP (Electric)	760	5305EAD-000000	\$15,759.00
ELITE 5355J	5.0 GPM / 3500 PSI	14"	355,000	Honda GX630 (Electric)	785	5355J-000000	\$13,889.00
5405J	5.0 GPM / 4000 PSI	14"	355,000	Honda GX630 (Electric)	810	5405J-000000	\$16,059.00
5505JH	4.5 GPM / 5000 PSI	14"	355,000	Honda GX630 (Electric)	850	5505JH-000000	\$22,009.00
5505J	4.5 GPM / 5000 PSI	14"	355,000	Vanguard 23 HP (Electric)	850	5505J-000000	\$21,539.00
8405HA	8.0 GPM / 4000 PSI	24"	625,000	Honda GX800 (Electric) EFI	1540	8405HA-000000	\$24,449.00
10305HA	10 GPM / 3000 PSI	24"	625,000	Honda GX800 (Electric) EFI	1750	10305HA-000000	\$24,999.00
115 VOLT							
MODEL	PERFORMANCE	COIL SIZE	BTU	POWER SOURCE	WT.	PART NUMBER	LIST
5305EAB	5.0 GPM / 3500 PSI	14"	355,000	Vanguard 18 HP (Electric)	860	5305EBD-000000	\$16,669.00
5355JB	5.0 GPM / 3500 PSI	14"	355,000	Honda GX630 (Electric)	810	5355JB000000	\$17,259.00
8305H	8.0 GPM / 3500 PSI	18"	625,000	Honda GX800 (Electric) EFI	1000	8305H-000000	\$19,650.00
OPTIONS							
Wheel Kit, Bolt-on Skid (Not Available for 8405HA) & 10305HA PN# 44056E-99008C				\$859.00	14" Stack Adapter 4355E-00215		\$180.00
Cart, Large Wheels with pull handle (CART-00001)				\$2,295.00	Square to 8" Round Adapter 550-00215 (must be used with 14" & 18" Stack Adapters)		\$196.00
Stainless Steel Frame				Call Factory	*Wireless Remote Control kit - On / Off Motor, Burner & Detergent. Includes Transmitter & Receiver		\$3,019.00
18" Stack adapter 8305-00215				\$221.00	*Additional Wireless Remote. Transmitter Only		\$609.00
2 - Gun System with Multi Unloader, Hose, Gun & Wand, 7 GPM and Up Models				\$550.00	Wall Mount Bracket for Wireless Remote		\$109.00



5355ENS

GED-EN SERIES EXTRA NARROW GASOLINE ENGINE DRIVE

Self-contained Hot Water Pressure Washers



Hot Water

Oil
Diesel/KeroseneGas Engine/
Electric Start

Stationary



Portable



Trailer

7 gallon gasoline & diesel fuel tanks • Adjustable temperature control • Hour meter • Racor fuel filter • Stainless Steel panels and coil wrap • 50 ft high pressure hose with quick disconnects • Trigger shut-off gun with wand • Pulsation dampner for long coil life • 15, 25 & 40 Degree nozzles • Optional Float Tank • 12V Burner Note: U1 Battery required on Electric Start

Not CARB compliant.



MODEL	PERFORMANCE	COIL SIZE	BTU	POWER SOURCE	MOUNTING	WT.	PART NUMBER	LIST
4405ENS	4.0 GPM / 4000 PSI	14"	355,000	Vanguard 18 HP (Electric)	Stationary	700	4405ENS-X00020	\$14,029.00
4405ENL	4.0 GPM / 4000 PSI	18"	355,000	Vanguard 18 HP (Electric)	Stationary	700	4405ENL-X00020	\$14,419.00
ELITE 5355ENS	5.0 GPM / 3500 PSI	14"	355,000	Vanguard 18 HP (Electric)	Stationary	700	5355ENS-X00020	\$11,778.00
5355ENL	5.0 GPM / 3500 PSI	18"	355,000	Vanguard 18 HP (Electric)	Stationary	800	5355ENL-X00020	\$14,379.00
4405HNS	4.0 GPM / 4000 PSI	14"	355,000	Honda GX630 (Electric)	Stationary	700	4405HNS-X00020	\$15,709.00
4405HNL	4.0 GPM / 4000 PSI	18"	355,000	Honda GX630 (Electric)	Stationary	700	4405HNL-X00020	\$16,099.00
5355HNS	5.0 GPM / 3500 PSI	14"	355,000	Honda GX630 (Electric)	Stationary	700	5355HNS-X00020	\$16,049.00
5355HNL	5.0 GPM / 3500 PSI	18"	355,000	Honda GX630 (Electric)	Stationary	800	5355HNL-X00020	\$16,439.00
ELITE 8405HNL	8.0 GPM / 4000 PSI	18"	570,000	Honda GX800 (Electric) EFI	Stationary	800	8405HNL-X00020	\$16,645.00
5355KNL	5.0 GPM / 3500 PSI	18"	355,000	Kohler EFI 19 HP (Electric)	Stationary	800	5355KNL-X00020	\$18,469.00
10305HNL	9.5 GPM / 3000 PSI	18"	570,000	Honda GX800 (Electric) EFI	Stationary	870	10305HNL-X00020	\$18,869.00

OPTIONS

Flat Free Wheel Kit with Handle - add 0 in place of X in P/N	\$425.00	Wireless Remote Control kit - On / Off Motor, Burner & Detergent. Includes Transmitter & Receiver	\$3,019.00
External Stainless Steel Float Tank	\$439.00	Additional Wireless Remote. Transmitter Only	\$609.00
18" Stack adapter 8305-00215	\$221.00	Stainless Steel Frame W/Pulley Shield	Call Factory
14" Stack adapter 4355E-00215	\$180.00	Bolt Down Kit for Stationary Mounting 5355EN-99009	\$49.00
Square to 8" round adapter 550-00215 (must be used with 14" or 18" Stack adapter)	\$196.00	2 - Gun System with Multi Unloader, Hose, Gun & Wand, 7 GPM and Up Models	\$550.00

Model 8405HNL:



ENLP SKID SERIES

Self-contained Hot Water Pressure Washers



Hot Water



Gas
(LP & NG)



Stationary

Propane Engine Drive • Propane Fired • Space Saver Skid Mount • Belt Drive Tri-plex Pump • Stainless Steel Wrapper • 115V Burner • 3000 Watt Generator • 126' Sch. 80 Coil • 15, 25 & 40 Degree Nozzle • Adjustable Temp. Control • Direct Water Feed • Downstream Chemical Injector.

MODEL	PERFORMANCE	COIL SIZE	BTU	POWER SOURCE	WT.	PART NUMBER	LIST
5355ENLP	5.0 GPM / 3500 PSI	14"	250, 000	Kohler CH730 Propane ES	800	555ENLP-000000	\$18,999.00
5355ENLP	5.0 GPM / 3500 PSI	14"	250, 000	23 HP Vanguard Propane ES	800	555ENLP-00000V	\$18,589.00

OPTIONS							
I5355AG-99012	Propane Burner Kit Includes 2 LP 100 # Bottles w/Hose & Regulator						\$2,149.00

Marketing
Resources
in one Place

Scan to
Log In



PREMIER BELT DRIVE SERIES

Self-contained Hot Water Pressure Washers



Hot Water



Oil
Diesel/Kerosene



Gas Engine
w/ Electric Start



Stationary



Trailer

Gas Engine Drive • Electric Start • Oil Fired Burner • Vertical Coil • 12V or 115V • 1-1/4" Square Tube Frame • Stainless Steel Control Panel, Top and Wrapper • Adjustable Temperature • High Pressure Soap • Non-Corrosive Float Tank with 3 Way Valve (Except PH5035KBPF) • Dual 18 Gallon Fuel Tanks • 3000 Watt Generator on 115 Models • 15, 25 & 40 Degree Nozzles • 158' Schedule Coil.

Not CARB compliant.

12 Volt Models							
MODEL	PERFORMANCE	COIL SIZE	BTU	POWER SOURCE	WT.	PART NUMBER	LIST
PH5030VB0F	5.0 GPM / 3500 PSI	18"	315,000	Vanguard 18 HP (Electric)	870	I5305-680000A	\$16,209.00
PH5030KB0F	5.0 GPM / 3500 PSI	18"	315,000	Kohler 19 HP (Electric)	870	I5355A000000A	\$16,899.00
PH5035HB0F	5.0 GPM / 3500 PSI	18"	315,000	Honda GX630 (Electric)	870	I5355F000000A	\$16,179.00
PH8035HB0F	8.0 GPM / 3500 PSI	18"	560,000	Honda GX800 (Electric)	960	I8305-080000A	\$21,779.00
PH5050KB0F	5.0 GPM / 5000 PSI	18"	560,000	Kohler 23.5 HP (Electric)	870	I5505-000000A	\$22,649.00
PH5035KBPF*	5.0 GPM / 3500 PSI	18"/LP	490,000	Kohler LP 21 HP (Electric)	925	I5355AG-Q883R1	\$23,599.00
115 Volt Models							
MODEL	PERFORMANCE	COIL SIZE	BTU	POWER SOURCE	WT.	PART NUMBER	LIST
PH5030VG0D	5.0 GPM / 3500 PSI	18"	490,000	Vanguard 18 HP (Electric)	870	I5305-600000A	\$17,149.00
PH5030KG0D	5.0 GPM / 3000 PSI	18"	490,000	Kohler 19 HP (Electric)	870	I5305-000000A	\$18,199.00
PH5035HG0D	5.0 GPM / 3500 PSI	18"	490,000	Honda GX630 (Electric)	870	I5355D000000A	\$17,769.00
PH8035HG0D	8.0 GPM / 3500 PSI	18"	560,000	Honda GX800 (Electric)	960	I8305-000000A	\$22,279.00
PH5050KG0D	5.0 GPM / 5000 PSI	18"	560,000	Kohler 23.5 HP (Electric)	870	I5505-000000A	\$22,599.00
OPTIONS							
I5355AG-99012	Propane Burner Kit Includes 2 LP 100 #Bottles w/ Hose & Regulator		\$2,149.00	CART-00007	Wheel Pull Cart for Gasoline Driven Premier		\$499.00
	Hour Meter		\$269.00	I2142-00710	Wheel Pull Cart for LP/LP Premier (Includes I5355AG-99012)		\$2,299.00
	Pressure Gauge		\$135.00	2 - Gun System with Multi Unloader, Hose, Gun & Wand, 7 GPM and Up Models			\$550.00
	Economy Steam Option - 250 Degree		\$499.00				



Model 5357C

DED DIESEL ENGINE DRIVE SERIES

Self-contained Hot Water Pressure Washers



Hot Water



Oil
Diesel/Kerosene



Diesel Powered
Engine



Portable with Wheel Kit or Skid Mount

Diesel engine drive • Electric start • Diesel Fired • Skid mount • 115 volt burner • 15, 25 & 40 Degree nozzles • Non-corrosive float tank with 3-way valve • Black color frame • Schedule 80 coil • Stainless wrapper & panel • Group 24 Battery required on Electric Start • ECM Module Included Except 5757KZ & 5357C with Key Switch Glow Plug

Key Feature Kohler KDW1003

The engine control module (ECM) is an electronic control unit that manages the engine's performance. It monitors various sensors and adjusts fuel injection, ignition timing, and other critical engine functions to optimize fuel efficiency and reduce emissions.

115 Volt							
MODEL	PERFORMANCE	COIL SIZE	BTU	POWER SOURCE	WT.	PART NUMBER	LIST
5357KZ	5.0 GPM / 3500 PSI	18"	550,000	Kubota Z602 Diesel (Electric)	965	5357KZ-000000	\$27,439.00
5357	5.0 GPM / 3500 PSI	18"	550,000	Kohler KDW1003 Diesel (Electric)	1260	5357-000000	\$30,669.00
5407	5.0 GPM / 4000 PSI	18"	550,000	Kohler KDW1003 Diesel (Electric)	1260	5407-000000	\$32,899.00
8307	8.0 GPM / 3000 PSI	18"	550,000	Kohler KDW1003 Diesel (Electric)	1260	8307-000000	\$34,999.00
5507	5.0 GPM / 5000 PSI	18"	550,000	Kohler KDW1003 Diesel (Electric)	1260	5507-000000	\$34,999.00
12 Volt							
MODEL	PERFORMANCE	COIL SIZE	BTU	POWER SOURCE	WT.	PART NUMBER	LIST
ELITE *5357C	5.0 GPM / 3500 PSI	14"	355,000	Kubota Z602 Diesel (Electric) 12 Volt Burner	845	5357-SHIT010	\$22,220.00

OPTIONS			
Wheel Kit, Heavy Duty (5357-99012)	\$1,339.00	Stainless Steel Frame	Call Factory
Cart, Large Wheels with Pull Handle	\$2,295.00	2-Gun System with Multi Unloader, Hose, Gun & Wand, 7 GPM and Up Models	\$550.00



DED BIG BOY DIESEL ENGINE DRIVE SERIES

Self-contained Hot Water Pressure Washers



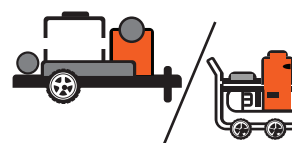
Hot Water



Oil
Diesel/Kerosene



Diesel Powered
Engine



Portable with Wheel Kit or Skid Mount



Model 10307KD

Diesel engine drive • Electric start • Diesel Fired • Skid mount • 115 or 12 volt burner • Non-corrosive float tank with 3-way valve • 15, 25 & 40 Degree nozzles • Black color frame • Schedule 80 coil • Stainless wrapper & panel • Group 24 Battery required on Electric Start • DSE Module Included.

Key Feature Kubota

DSE Module Auto Start/Stop Controller Monitors engine speed, oil pressure, coolant temperature, voltage and current. The modules will give comprehensive engine and alternator protection. This will be indicated on the largest back-lit LCD icon display in its class via an array of warning, electrical trip and shutdown alarms.

115 Volt							
MODEL	PERFORMANCE	COIL SIZE	BTU	POWER SOURCE	WT.	PART NUMBER	LIST
5357K	5 GPM/3500 PSI	18"	550,000	Kubota D902 (Electric)	1360	5357K-000000	\$32,199.00
5407K	5 GPM/4000 PSI	18"	550,000	Kubota D902 (Electric)	1350	5407K-000000	\$36,900.00
5507K	5 GPM/5000 PSI	18"	550,000	Kubota D1305 (Electric)	1260	5507K-000000	\$41,999.00
8307K	8 GPM/3000 PSI	18"	690,000	Kubota D1305 (Electric)	1400	8307K-000000A	\$36,249.00
10307KK	10 GPM/3000 PSI	24"	785,000	Kubota D1305 (Electric) 337' Coil	1560	10307KK-000000	\$42,999.00
12 Volt							
MODEL	PERFORMANCE	COIL SIZE	BTU	POWER SOURCE	WT.	PART NUMBER	LIST
10307KD	10 GPM/3000 PSI	18"	625,000	Kubota D902 (Electric) 206' Coil 12V Burner	1400	10307KD-000000	\$38,199.00
10307KKA	10 GPM/3000 PSI	24"	710,000	Kubota D1305 (Electric) 337' Coil 12V burner	1560	10307KK-080000	\$42,249.00
OPTIONS							
Wheel Kit, Heavy Duty (5357-99012)				\$1,339.00	Stainless Steel Frame		Call Factory
Cart, Large Wheels with Pull Handle (Cart -00008)				\$2,295.00	2-Gun System with Multi Unloader, Hose, Gun & Wand, 7 GPM and Up Models		\$550.00



ALL ELECTRIC SERIES

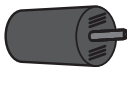
ETL Certified to UL 1776 and CSA C22.2
Self-contained Hot Water Pressure Washers



Hot Water



Electric Heat



Electric Motor



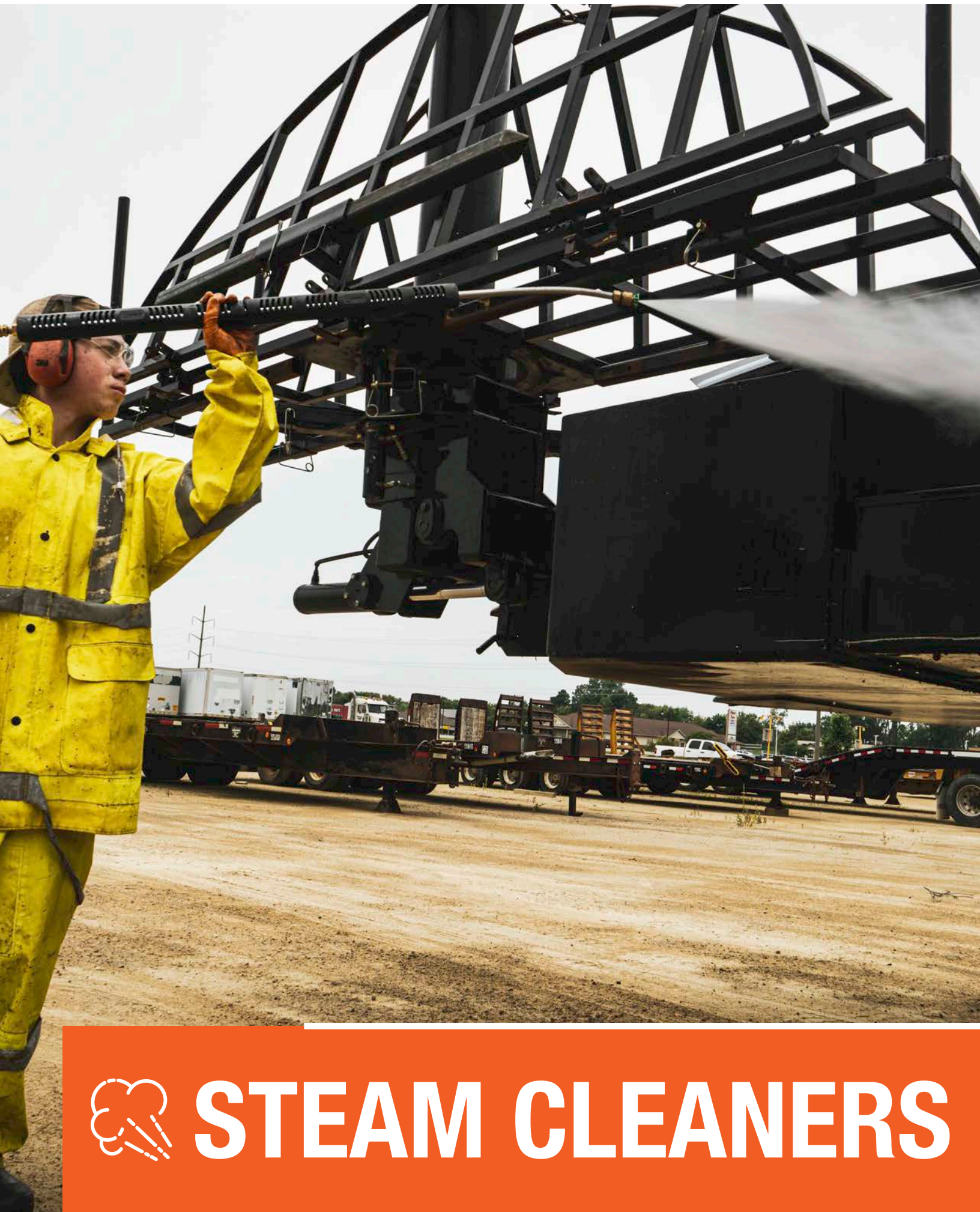
Stationary

All Electric UL Series: Stationary • Electric heater module • Stainless steel immersion heaters • Temperature control • Belt drive tri-plex pump • Non-corrosive float tank • High-pressure detergent application • Trigger gun • 15, 25 & 40 Degree nozzles

MODEL	PERFORMANCE	POWER SOURCE	AMPS	WT.	PART NUMBER	LIST
* 108	1.7 GPM / 400 PSI	208-240-460V 3 PH 3/4 HP	120 / 60	350	108-30513	\$18,129.00
2148	2.0 GPM / 1400 PSI	208-240-460V 3 PH 2 HP	70 / 35	375	2148B-000010	\$15,769.00
3158	3.0 GPM / 1500 PSI	208-240-460V 3 PH 3 HP	130 / 65	375	3158B-000010	\$18,059.00
4108	4.0 GPM / 1000 PSI	208-240-460V 3 PH 3 HP	130 / 65	375	4108B-000010	\$18,059.00
4208	3.5 GPM / 2000 PSI	208-240-460V 3 PH 5 HP	130 / 65	485	4208B-000010	\$18,599.00
4308	3.5 GPM / 3000 PSI	208-240-460V 3 PH 7.5 HP	140 / 70	530	4308B-000010	\$19,999.00
4358	3.8 GPM / 3500 PSI	208-230-460V 3 PH 10 HP	150 / 75	530	4358B-000010	\$21,719.00
5308	4.7 GPM / 3000 PSI	460V 3 PH 10 HP	100	525	5308B-000010	\$23,079.00
8208	8.0 GPM / 2000 PSI	460V 3 PH 10 HP	130	700	8208B-000010	\$27,899.00
8308	8.0 GPM / 3000 PSI	460V 3 PH 20 HP	140	725	8308B-000010	\$31,899.00

* Not Currently ETL Certified to UL1776

OPTIONS			
Wheel kit - 4 pneumatic wheels and hose reel socket - p/n 4108-99008C	\$989.00	Smart Timer (Auto On/Auto Off 30 sec. time delay w/ adj. lockout timer)	\$999.00
Remote Control	\$660.00	Auto Shutdown Timer (Manual On / Auto Off w/ adj. Omron timer)	\$1,299.00
Additional Remote	\$460.00	Pump Clutch	\$1,899.00
Soap Solenoid	\$399.00	575 Volt 3 Phase	\$1,099.00
Additional Soap Solenoid	\$299.00	Stainless Steel Frame	Call Factory
2-Gun System with Multi Unloader, Hose, Gun & Wand, 7 GPM and Up Models	\$550.00	Steam Option	\$1,089.00



STEAM CLEANERS



Model 122X4



Model 122



Model 240



Model 240EN

OIL FIRED STEAM CLEANERS

Industrial Steam Cleaners



Steam

Oil
Diesel/Kerosene

Electric Motor



Portable

Oil Fired • Electric • Portable • Non Flat wheels • Belt drive tri-plex pump • High-efficiency electric motor • Non-corrosive float tank • High-pressure detergent application • Open gun

MODEL	PERFORMANCE	COIL SIZE	BTU	HP/AMPS	WT.	PART NUMBER	LIST
122	100 GPH / 250 PSI	14"	392,000	3/4 HP 15 Amps	400	122-20000	\$8,189.00
122X4	120 GPH / 400 PSI	14"	392,000	3/4 HP 15 Amps	535	122X-000000	\$7,489.00
240	240 GPH / 250 PSI	18"	630,000	2.3 HP 20 Amps	665	240-20000	\$12,459.00
240EN	240 GPH / 350 PSI	18"	630,000	2.3 HP 20 Amps	665	240EN-000000	\$10,999.00

OPTIONS

Trigger Gun Control	\$675.00	230 Volt 1 PH	\$499.00
Stainless Steel Frame	Call Factory	230 Volt 3 PH	\$699.00
Flat Free Wheels in Place of Pneumatic Wheels	N/C	Rear Caster Wheel Kit (420X-99008) for 122X4	\$450.00

DRY STEAM GENERATORS

Industrial Steam Cleaners



Model 246



Model 126



Steam

Oil
Diesel/Kerosene

Electric Motor



Portable

Oil Fired • Electric • Portable • Pneumatic wheels • 14 boiler horsepower (246 only) • Belt drive tri-plex pump • High-efficiency electric motor • Non-corrosive float tank

MODEL	PERFORMANCE	COIL SIZE	BTU	POWER SOURCE	HP/AMPS	WT.	PART NUMBER	LIST
126	1 GPM / 100 PSI	14"	390,000	115 V 1 PH	3/4 HP 15 AMPS	450	126-000000	\$15,199.00
246	1 GPM / 100 PSI	18"	625,000	115 V 1 PH	3/4 HP 15 AMPS	725	246-000000	\$18,599.00

GAS FIRED STEAM CLEANERS

Industrial Steam Cleaners



Steam



Gas
(LP & NG)



Electric Motor
w/ Belt Drive



Stationary

Electric • Gas fired • Stationary • Belt drive tri-plex pump • High-efficiency electric motor • Noncorrosive float tank • High-pressure detergent application • CSD2 Timer (Models 301 & 401) • Electronic Ignition • Remote Ready • Open gun & Adjustable temperature control on 181, 241 • Trigger Gun & Adjustable temperature control on 301, 401 • Adjustable Panel Mount Temperature Control and Hour Meter Included.

ETL certified to UL-60335-1, 60335-2-79 and CSA Except Model 401

DRAFT DIVERTER NO LONGER INCLUDED.

MODEL	PERFORMANCE	COIL SIZE	STACK	BTU	POWER SOURCE	HP/AMPS	WT.	PART NUMBER	LIST
181D	180 GPH/250 PSI	18"	12"	490,000	115V 1 PH	2.3 HP 20 Amp	600	181D-00V010	\$11,569.00
241D	240 GPH/250 PSI	24"	12"	650,000	115V 1 PH	2.3 HP 20 Amp	800	241D-00V010	\$14,799.00
301D	300 GPH/400 PSI	30"	12"	880,000	230V 1 PH	4 HP 20 Amp	1385	301D-00V010Z	\$22,219.00
401	400 GPH/400 PSI	30"	16"	1,200,000	230V 1 PH	4 HP 20 Amp	1450	401D-00V0DZ	\$24,819.00

OPTIONS			
Draft Diverter, 16" (Z01-00102) Model 401	\$499.00	Model 241 460V 3 PH	\$529.00
Draft Diverter, 12" (Z01-00101)	\$263.00	Model 301 230V / 460V 3 PH	\$269.00
Stainless Steel Wrapper (18")	\$389.00	181 & 241 auto cool down open gun only	\$1,259.00
Stainless Steel Wrapper (24")	\$499.00	301 & 401 auto cool down open gun only	\$3,309.00
Stainless Steel Wrapper (30")	\$789.00	Temp Gauge	\$149.00
Model 181 230V 3 PH	\$469.00	Pressure Gauge	\$109.00
Model 181 460V 3 PH	\$529.00	2, 4, 5, 6, 8 & 10 HP Motors (1PH)	
Model 241 230V 3 PH	\$469.00	REM-99067 Remote Control OFF/ON PUMP & BURNER - No Cord	\$460.00
		REM-99067-10 Remote with 10 Ft Cord	\$550.00
		REM-99067-20 Remote with 20 Ft Cord	\$630.00
		REM-99067-30 Remote with 30 Ft Cord	\$710.00
		REM-99067-40 Remote with 40 Ft Cord	\$790.00
		REM-99067-50 Remote with 50 Ft Cord	\$870.00
		REM-99067-60 Remote with 60 Ft Cord	\$950.00
		REM-99067-80 Remote with 80 Ft Cord	\$1,030.00



DISTRIBUTOR MARKETING PORTAL

Available 24/7

Get information and up-to-date marketing assets from **Alkota**

If you are a current Alkota Distributor and would like to access our Marketing Portal, please simply complete our form.

**Scan To
Register**



Login to access to the latest marketing assets and sales tools to help grow your business.

**Scan To
Log In**



We want to welcome you to explore and browse our site for news, resources, marketing materials, and more!

The Distributor Marketing Portal Features



Lead Times



Financing



Marketing Assets



Monthly Specials



Alkota Calendar

More**Tools**

Warranty

You can find information about Alkota's warranty, including claim forms, warranty details, OEM contact information and more.

CO-OP Information

This program has been developed to help you create greater demand for our products. We're confident that you will find this Co-Op program flexible and easy to use.

Contact Now:



800-255-6823



info@alkota.com



www.alkota.com



WATER HEATERS



STATIONARY OIL FIRED WATER HEATERS

Industrial Water Heaters



Water Heater



Oil
Diesel/Kerosene



Stationary

Electric • Oil fired • Heavy gauge construction • 115 volt burner • High fuel efficiency • Oil Primary *
Exclusive cold water wrap design • Schedule 80 coil • Adjustable thermostat • Fuel Solenoid
• Flow switch • 13 gallon fuel tank on 400, 410, 500, 510 • 27 gallon fuel tank on 760, 1010, 1060

***ETL certified to UL-60335-1, 60335-2-79 and CSA
Fuel Tanks are Standard on UL Listed Units.**



MODEL	BTU	COIL SIZE	STACK	POWER SOURCE	COIL	WT.	PART NUMBER	LIST
410	310,000	14"	8"	115 V	168', 1/2" ID, Schedule 80	400	410D-000010	\$6,489.00
510	430,000	18"	8"	115 V	250', 1/2" ID, Schedule 80	425	510D-000010	\$7,219.00
760	620,000	24"	12"	115 V	420', 1/2" ID, Schedule 80	725	760D-000010	\$12,799.00
1010	850,000	30"	12"	115 V	483', 3/4" ID, Schedule 80	1095	1010D-000010	\$15,699.00
1060	1,200,000	30"	12"	115 V	483', 3/4" ID, Schedule 80	1250	1060D-000010	\$18,299.00

OPTIONS			
Voltages	Call Factory	Stainless Steel Frame	Call Factory
Hour Meter	\$269.00	12 Volt DC in Place of 115 Volt (Models 410, 510, 760)	\$420.00
Stainless Steel Wrapper 14"	\$359.00		
Stainless Steel Wrapper 18"	\$419.00		
Stainless Steel Wrapper 24"	\$589.00		
Stainless Steel Wrapper 30"	\$849.00		



STATIONARY GAS FIRED WATER HEATERS NATURAL GAS

Industrial Water Heaters



Water Heater



Gas
(LP & NG)



Stationary

Heavy Gauge Construction • Natural gas • 115 volt burner • High fuel efficiency • Exclusive cold water wrap • Adjustable thermostat • Auto Ignition • Flow switch

MODEL 411 NOT UL CERTIFIED.

***ETL certified to UL-60335-1, 60335-2-79 and CSA**

MODEL	BTU	COIL SIZE	STACK	COIL	WT.	PART NUMBER	LIST
411	320,000	14"	10"	168', 1/2" ID, Schedule 80	400	411D-000000	\$6,459.00
511	415,000	18"	12"	250', 1/2" ID, Schedule 80	425	511D-00V010	\$8,159.00
761	620,000	24"	12"	420', 1/2" ID, Schedule 80	725	761D-00V010	\$13,369.00
1011 NG	750,000	30"	12"	483', 3/4" ID, Schedule 80	1095	1011D-00V010	\$18,699.00



STATIONARY GAS FIRED WATER HEATERS LP GAS

Industrial Water Heaters



Water Heater



Gas
(LP & NG)



Stationary

Heavy Gauge Construction • LP fired • 115 volt burner • High fuel efficiency • Exclusive cold water wrap • Adjustable thermostat • Auto Ignition • Flow switch

MODEL 411 NOT UL CERTIFIED.

***ETL certified to UL-60335-1, 60335-2-79 and CSA**

MODEL	BTU	COIL SIZE	STACK	COIL	WT.	PART NUMBER	LIST
411	320,000	14"	10"	168', 1/2" ID, Schedule 80	400	411D-500000	\$6,459.00
511	415,000	18"	12"	250', 1/2" ID, Schedule 80	425	511D-50R010	\$8,159.00
761	620,000	24"	12"	420', 1/2" ID, Schedule 80	725	761D-50R010	\$13,369.00
1011 LP	750,000	30"	12"	483', 3/4" ID, Schedule 80	1095	1011D-50R010	\$18,699.00

OPTIONS

Voltages	Call Factory	Stainless Steel Wrapper 18"	\$419.00
Hour Meter	\$269.00	Stainless Steel Wrapper 24"	\$589.00
Electronic Modulating Gas Valve System	\$3,999.00	Stainless Steel Wrapper 30"	\$849.00
Stainless Steel Wrapper 14"	\$359.00	Electronic Ignition for 411 Only. Standard on all other models	\$649.00
10" Draft Diverter Z01-00100	\$179.00	Stainless Steel Frame	Call Factory
12" Draft Diverter Z01-00101	\$263.00		



Model 210WH



Model 760H



Model 510H

HORIZONTAL OIL FIRED WATER HEATERS SERIES

Industrial Water Heaters



Water Heater



Oil
Diesel/Kerosene



Stationary

Electric • Oil fired • Stationary • Heavy gauge construction • 12 Volt DC burner • High fuel efficiency • Exclusive cold water wrap • Spiral design heat exchanger in schedule 80 rating • Flow Switch • High Limit Temp Control • On/Off Switch • Oil Primary (except 210H)

MODEL	BTU	COIL SIZE	FUEL TANK SIZE	COIL	WT.	PART NUMBER	LIST
210WH	230, 000	14"	10 GAL	95', 1/2" ID, Schedule 80	305	210WH-000000	\$4,489.00
410H	320, 000	14"	14 GAL	126', 1/2" ID, Schedule 80	475	410H-000000	\$6,469.00
510H	550, 000	18"	20 GAL	206', 1/2" ID, Schedule 80	775	510H-000000	\$8,229.00
760H	760, 000	24"	50 GAL	337', 3/4" ID, Schedule 80	1150	760H-000000	\$17,249.00

OPTIONS			
Add 18" & 14" Stack Adapter	\$220.00	Stainless Steel Coil Wrapper 18"	\$419.00
Add Square to 8" Round	\$180.00	Stainless Steel Coil Wrapper 24"	\$589.00
Stainless Steel Coil Wrapper 14"	\$359.00		

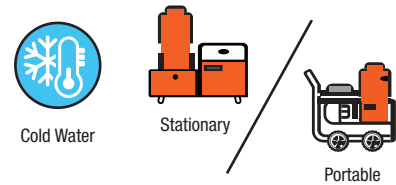


COLD WATER



219CSE ELECTRIC PRESSURE WASHER

Industrial Cold Water High Pressure Washer



Electric • Direct drive tri-plex pump with ceramic plungers • Chemical Injector w/Tubing • 36' GFCI Cord & Plug • 3/8" QD Discharge • 3/4" Garden Hose Inlet

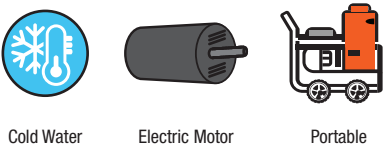
MODEL	PERFORMANCE	AMPS	VOLTAGE	WT.	PART NUMBER	LIST
219CSE	1.5 GPM / 1500 PSI	15	120	33	219CSE	\$995.00

OPTIONS		
219CSE-01	Gun, 50 ft Hose , 4 Nozzles	Included
219CSE-02	Wall Mount Kit	\$145.00
219CSE-03	Wheel Cart Kit	\$349.00



ES ECONOMY SERIES

Industrial Cold Water High Pressure Washer



Electric • Direct drive tri-plex pump • Trigger gun • Pneumatic wheels • 15, 40, 65 Degree Nozzle • Heavy Gauge Steel Frame • TEFC Motor on E430A

MODEL	PERFORMANCE	ELECTRICITY	AMP	HP	WT.	PART NUMBER	LIST
E212	2.1 GPM / 1200 PSI	115V 1 PH	19	2.3 HP	105	E212-20420	\$2,499.00
E320	2.8 GPM / 2000 PSI	230V 1 PH	19	4 HP	135	E320-30420	\$3,109.00
E420	3.5 GPM / 2000 PSI	230V 1 PH	31	5 HP	150	E430A-SHE029	\$4,629.00
E430A	4.0 GPM / 2500 PSI	230V 1 PH	31	7.5 HP	275	E430A-00000	\$5,799.00

Model 445CSH
Belt Drive



Model 44CSH Skid Base

CHALLENGER COLD WATER SERIES

Industrial Cold Water High Pressure Washer



Cold Water



Gas Drive



Stationary



Portable

Gasoline engine direct drive • Recoil start • External unloader / EZ Start • Thermal Protector • 0, 15, 25 & 40 Degree nozzles • Aluminum frames • Flat Free Wheels • Models available with General, Comet and Cat Pumps* Models with RMV pumps are axial with built in unloader

Not CARB compliant.

MODEL	PERFORMANCE	PUMP	HOSE LENGHT	ENGINE	DRIVE	WT.	PART NUMBER	LIST
325CSH	3 GPM/2500 PSI	RCV3G27	50 ft	GX 200 Honda	Direct Drive	115	325CS-020000	\$2,149.00
445CSH	4 GPM/4000 PSI	RRV4G40HD	50 ft	GX 390 Honda	Direct Drive	155	445CS-020000	\$2,829.00
445CSH	4 GPM/4000 PSI	RRA4G40N	50 ft	GX 390 Honda	Belt Drive	165	445CS-120000	\$3,659.00
216CSE	2 GPM/1600 PSI	TT9061EBF	50 ft	2.3 HP, 115V 1 PH 20 Amp	Direct Drive	105	216CS-000000	\$2,899.00
320CSE	3 GPM / 2000 PSI	TT9071EBF	50 ft	4 HP, 220V 1 PH 20 Amp	Direct Drive	120	320CS-000000	\$3,239.00

OPTIONS

Electric Start for 445CS models with Honda & Kohler engines	\$729.00	445CS Belt Drive Series - External Unloader - In place of AR Pump TSS1511 General Pump 4@3500	\$199.00
325CS Direct Drive Series - External Unloader - In place of AR Pump 4DNX27GSI Cat Pump.	\$289.00	5CP4120CSS Cat Pump	\$1,359.00
TP2530J34 General Pump	\$159.00	FWS25040S Comet Pump	\$499.00
EP1506G6 General Pump	\$159.00	Lift Handles for Skid Base Model	\$99.00
LWD3020G Comet Pump	\$199.00	Skid Base Only with Feet - Deduct	-\$93.00
445CS Direct Drive Series - External Unloader - In place of AR Pump 66DX40G Cat Pump	\$579.00	Smart Timer (Auto On / Auto Off 20 sec time delay w/adj. lockout) Electric Units Only	\$999.00
EZ4040G General Pump	\$159.00	Battery Box With Tray	\$59.00
EP1313G8 General Pump	\$69.00		

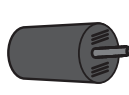
COMPACT WC SERIES
Industrial Cold Water High Pressure Washer



Cold Water



Oil
Diesel/Kerosene



Electric Motor



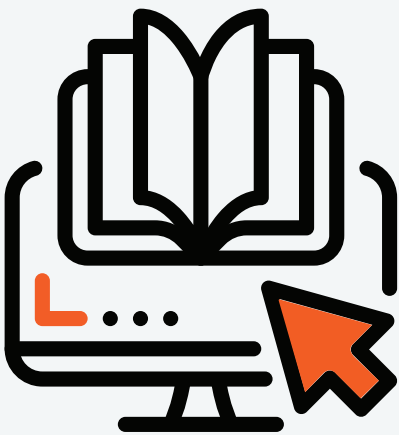
Stationary

The WC SERIES offers stationary convenience while providing excellent cleaning power • Stainless steel panels • detergent injector control • on/off switch • 25 ft. high pressure hose, shut-off gun, 24" wand • 160 degree inlet water temperature • Triplex pump standard

CSD2: Smart Timer

MODEL	PERFORMANCE	HP/AMPS	WT.	PART NUMBER	LIST
WC2015EDXD	2.0 GPM /1500 PSI	2 HP Electric 115 V 1 Phase / 20 AMP	90 lbs.	I210W-000000	\$2,979.00
WC3020EDXA	3.0 GPM /2000 PSI	4 HP Electric 220 V 1 Phase / 20 AMP	120 lbs.	I320W-000000	\$3,389.00
WC2015EDXD	2.0 GPM /1500 PSI	2 HP Electric 115 V 1 Phase / 20 AMP with CSD2	90 lbs.	I210W-00000Z	\$3,769.00
WC3020EDXA	3.0 GPM /2000 PSI	4 HP Electric 220 V 1 Phase / 20 AMP with CSD2	120 lbs.	I320W-00000Z	\$4,179.00

Alkota
Preferred
Site



Scan to
Log In

Manuals and Schematics,
Just a Click Away.



Stainless Steel
Hood Option Shown

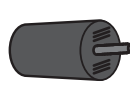


BD INDUSTRIAL SERIES

Industrial Cold Water High Pressure Washer



Cold Water



Electric Motor
w/ Belt Drive



Stationary



Portable

Electric • Belt driven tri-plex pump • Low-pressure detergent application • Trigger gun with Dual Lance Wand • Down Stream Injector • 15, 25 & 40 Degree nozzles • Hour Meter • Smart Timer for Auto Shut Down • **Remote Ready (Max. 1 Remote Only)** • Optional wall mount or wheel kit available

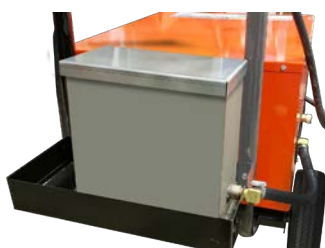
MODEL	PERFORMANCE	ELECTRICITY	HP	WT.	PART NUMBER	LIST
216BD	2.0 GPM / 1600 PSI	115V 1 PH / 20 Amp	2.3 HP	230	216BD-00000ZA	\$3,999.00
311BD	3.0 GPM / 1100 PSI	115V 1 PH / 20 Amp	2.3 HP	230	311BD-00000ZB	\$3,999.00
320BD	3.0 GPM / 2000 PSI	230V 1 PH / 20 Amp	4 HP	330	320BD-00000ZB	\$4,659.00
518BD	5.0 GPM / 1800 PSI	230V 1 PH / 24 Amp	6 HP	330	518BD-00000Z	\$5,489.00
420BD	3.5 GPM / 2000 PSI	230V 1 PH / 22 Amp	5 HP	330	420BD-00000ZA	\$5,229.00
430BD	4.0 GPM / 3000 PSI	230V 1 PH / 32 Amp	8 HP	325	430BD-00000Z	\$5,719.00
530BD	5.0 GPM / 3000 PSI	230V 3 PH / 25 Amp	10 HP	325	530BD-00000Z	\$6,909.00

OPTIONS			
230 Volt Three Phase	\$169.00	Hose Reel (REEL-DHR50150D) Holds up to 150 ft 3/8" Hose	\$467.00
460 Volt Three Phase in Place of 230V 3 PH	N/C	24" Floor Stand	\$639.00
Wheel kit with accessories Box (530HD-99168)	\$629.00	48" Floor Stand	\$979.00
(530HD-99168W) Wall Mount Kit	\$649.00	24" SS Floor Stand	\$1,949.00
(530HD-99168W-SS) Stainless Steel Wall Mount Kit	\$1,019.00	48" SS Floor Stand	\$2,189.00
Float Tank (For Wheel Kit Only)	\$769.00	Remote On/Off with 10ft Wire REM-99071-10	\$520.00
Float Tank (Free Standing)	\$819.00	Remote On/Off with 20ft Wire REM-99071-20	\$590.00
Wireless Remote Control kit - On/Off Motor & Chemical	\$3,019.00	Remote On/Off with 30ft Wire REM-99071-30	\$660.00
Additional Wireless Remote	\$609.00	Remote On/Off with 40ft Wire REM-99071-40	\$730.00
Wall Mount Bracket for Wireless Remote	\$109.00	Remote On/Off with 40ft Wire REM-99071-50	\$800.00
Wireless Remote Control-Kit On/Off Motor & Chemical 1 & Chemical 2	\$3,329.00	High Temperature Kit Model 216BD & 311BD	\$368.00
Stainless Steel Wheel Kit with Accessories Box (530HD-99168-SS)	\$1,789.00	High Temperature Kit Model 320BD & 420BD	\$315.00
Stainless Steel Hood	\$599.00	High Temperature Kit Model 430BD & 530BD	\$683.00
Stainless Steel Hood & Base	\$729.00		

ACCESSORIES:



Optional 4 Wheel Cart



Optional Float Tank



Optional Wall Mount Bracket
with optional Hose Reel

Shown with Optional
Pneumatic Wheels



SM GASOLINE SERIES

Industrial Cold Water High Pressure Washer



Cold Water



Gas Drive



Portable

Gasoline engine drive • Belt driven tri-plex pump • Trigger gun • 15, 25 & 40 Degree nozzles • Flat-Free wheels • 12 Volt Battery required on Electric Start • Now with removable power platform with belt guard converting into M Series.

Not CARB compliant.

MODEL	PERFORMANCE	ENGINE	WT.	PART NUMBER	LIST
435SM	4.0 GPM / 3500 PSI	GX390 (Recoil)	435	435SM-000000	\$5,499.00
445SM	4.0 GPM / 4000 PSI	Vanguard 18 HP (Electric)	435	445SM-000000	\$7,209.00
535SM	5.0 GPM / 3000 PSI	Vanguard 18 HP (Electric)	435	535SM-000000	\$7,329.00
545SM	5.0 GPM / 4000 PSI	Vanguard 18 HP (Electric)	435	545SM-000000	\$7,959.00
555SM	5.0 GPM / 5000 PSI	Honda GX 800 (Electric) EFI	485	555SM-000000	\$10,769.00
555SVM	4.5 GPM / 5000 PSI	Vanguard 23 HP (Electric)	485	555SVM-000000	\$9,499.00
845SM	8.0 GPM / 4000 PSI	Honda GX 800 (Electric) EFI	485	845SM-000000	\$10,949.00
1045SM	10.0 GPM / 3000 PSI	Vanguard 35 HP (Electric)	485	1045SM-000000	\$12,259.00
1035SM	10.0 GPM / 3000 PSI	Honda GX 800 (Electric) EFI	485	1035SM-000000	\$12,029.00

OPTIONS

Battery Tray & Box	\$189.00	4 Wheels in Place of 2 Wheels	\$229.00
Downstream Detergent Injector Assembly (3 to 5 GPM only)	\$69.00	Honda GX630 In place of Vanguard 18HP	\$1,299.00
Pneumatic Wheels in place of Flat-Free	N/C	Honda GX800 in place of Vanguard 23HP	\$1,299.00

M GASOLINE SERIES

Industrial Cold Water High Pressure Washer



Cold Water



Gas Drive



Stationary

Stationary Version of SM Series • Gasoline engine drive • Belt driven tri-plex pump • Trigger gun • 15, 25 & 40 Degree nozzles • SS Belt Guard • 12 Volt Battery required on Electric Start. Note: Fuel Tank, Battery Tray & Box Not Included

Not CARB compliant.

MODEL	PERFORMANCE	ENGINE	WT.	PART NUMBER	LIST
435M	4.0 GPM / 3500 PSI	GX390 (Recoil)	325	435M-000000	\$5,199.00
445M	4.0 GPM / 4000 PSI	Vanguard 18 HP (Electric)	375	445M-000000	\$6,889.00
535M	5.0 GPM / 3000 PSI	Vanguard 18 HP (Electric)	375	535M-000000	\$6,999.00
545M	5.0 GPM / 4000 PSI	Vanguard 18 HP (Electric)	375	545M-000000	\$7,599.00
555M	5.0 GPM / 5000 PSI	Honda GX 800 (Electric) EFI	435	555M-000000	\$10,279.00
555VM	4.5 GPM / 5000 PSI	Vanguard 23 HP (Electric)	435	555VM-000000	\$9,069.00
845M	8.0 GPM / 4000 PSI	Honda GX 800 (Electric) EFI	435	845M-000000	\$10,439.00
1045M	10.0 GPM / 3000 PSI	Vanguard 35 HP (Electric)	405	1045M-000000	\$11,699.00
1035M	10.0 GPM / 3000 PSI	Honda GX 800 (Electric) EFI	405	1035M-000000	\$11,479.00

OPTIONS

Battery Tray & Box	\$189.00	Remote Mounted Fuel Tank	\$499.00
--------------------	----------	--------------------------	----------



WASH BAY SERIES

ETL certified to UL-60335-1, 60335-2-79 and CSA

Industrial Cold Water High Pressure Washer



Cold Water



Electric Motor
w/ Belt Drive



Stationary

UL Listed Electric • Stationary • Belt Driven Tri-Plex Pump • High Efficiency Electric Motor • Non-Corrosive Float Tank • High Pressure Detergent Application • Hour Meter • Smart Timer • Remote Ready • Trigger Gun • 15, 25 & 40 Degree Nozzles

MODEL	PERFORMANCE	ELECTRICITY	HP	WT.	PART NUMBER	LIST
216D	2.0 GPM / 1600 PSI	115 V, 1 PH / 20 Amp	2.3	500	216D-00001Z	\$5,002.00
311D	3.0 GPM / 1100 PSI	115 V, 1 PH / 20 Amp	2.3	500	311D-00001Z	\$5,417.00
320D	3.0 GPM / 2000 PSI	230 V, 1 PH / 20 Amp	4	520	320D-00001Z	\$5,978.00
420D	3.8 GPM / 2000 PSI	230V, 1 PH / 30 Amp	5	520	420D-00001Z	\$6,430.00
423D	3.7 GPM / 2300 PSI	230V, 1 PH / 30 Amp	6	520	423D-00001Z	\$6,744.00
430D	3.8 GPM / 3000 PSI	230V, 1 PH / 40 Amp	8	520	430D-00001Z	\$6,870.00
518D	4.8 GPM / 1800 PSI	230V, 1 PH / 30 Amp	6	520	518D-00001Z	\$7,563.00
523D	5.0 GPM / 2300 PSI	230V, 1 PH / 40 Amp	8	520	523D-00001Z	\$7,989.00
530D	5.0 GPM / 3000 PSI	230V, 3 PH / 30 Amp	10	520	530D-00001Z	\$8,699.00
540D	5.0 GPM / 4000 PSI	230V, 3 PH / 40 Amp	15	620	540D-00001Z	\$10,469.00
550D	5.0 GPM / 5000 PSI	230V, 3 PH / 50 Amp	20	680	550D-00001Z	\$10,869.00
730D	7.0 GPM / 3000 PSI	230V, 3 PH / 40 Amp	15	620	730D-00001Z	\$10,569.00
825D	8.0 GPM / 2500 PSI	230V, 3 PH / 40 Amp	15	550	825D-00001Z	\$10,669.00
835D	8.0 GPM / 3500 PSI	230V, 3 PH / 50 Amp	20	640	835D-00001Z	\$10,989.00
1020D	10.0 GPM / 2000 PSI	230V, 3 PH / 40 Amp	15	620	1020D-00001Z	\$10,719.00
1030D	10.0 GPM / 3000 PSI	230V, 3 PH / 50 Amp	20	640	1030D-00001Z	\$11,089.00

OPTIONS

Stainless Steel Options Available	Call Factory	REM-99067 REMOTE CONTROL OFF/ON PUMP & SOAP - No Cord - Requires Soap Solenoid	\$545.00
Omron Timer (Auto On / Auto Off 30sec time delay, 230V / 460V)	\$300.00	REM-99067-10 Remote with 10 Ft Cord	\$640.00
Wireless Remote	\$3,019.00	REM-99067-20 Remote with 20 Ft Cord	\$725.00
Additional Wireless Remote	\$609.00	REM-99067-30 Remote with 30 Ft Cord	\$810.00
Wall Mount Bracket for Wireless Remote	\$109.00	REM-99067-40 Remote with 40 Ft Cord	\$895.00
REM-99071 Remote Control OFF/ON- No Cord	\$300.00	REM-99067-50 Remote with 50 Ft Cord	\$980.00
REM-990071-10 Remote with 10 Ft Cord	\$460.00	REM-99067-60 Remote with 60 Ft Cord	\$1,065.00
REM-990071-20 Remote with 20 Ft Cord	\$550.00	REM-99067-80 Remote with 80 Ft Cord	\$1,150.00
REM-990071-30 Remote with 30 Ft Cord	\$630.00	Soap Solenoid must be added when ordering Remote with Soap	\$389.00
REM-990071-40 Remote with 40 Ft Cord	\$710.00	Hose Trolley Kit HTS-99000	\$1,296.00
REM-990071-50 Remote with 50 Ft Cord	\$790.00	SS Hose Trolley Kit HTS-99000-SS	\$1,895.00
REM-990071-60 Remote with 60 Ft Cord	\$870.00	Curtain Walls	Call Factory
REM-990071-80 Remote with 80 Ft Cord	\$950.00		

WASH CANNON SERIES
Industrial Cold Water High Pressure Washer



Cold Water



Electric Motor
Option



Electric Motor
w/ Belt Drive



Stationary

Wash Cannon Series is a high volume, low pressure system designed to effectively and economically complete large cleaning jobs quickly. This site specific package eliminates the need to provide a filtration or a water treatment system. The Alkota wash cannon utilizes a diaphragm pump that can handle solids up to 3/32 in size. 100' hose standard.

MODEL	PERFORMANCE	ELECTRICITY	HP	WT.	PART NUMBER	LIST
25500	25 GPM/500 PSI	230V, 3 PH / 28 Amp	10	720	2550C-000000	\$16,749.00
25750	25 GPM/700 PSI	230V, 3 PH / 40 Amp	15	740	2575C-000000	\$17,669.00
25755	25 GPM/700 PSI	Honda GX630	20	770	2575C-000000A	\$19,419.00
*2110	21 GPM/1000 PSI	230V, 3 PH / 40 Amp	15	740	2110-000000A	\$21,399.00

Note: Model 2110 is plunger style pump.

OPTIONS			
25500 230 V 1PH in place of 3 PH	\$1,129.00	460 V 3 PH in Place of 230 V 3 PH	N/C



Cold Water



Stationary

MULTI-GUN, VARIABLE SPEED SYSTEM
Industrial Cold Water High Pressure Washer

Multi-gun Systems efficiently handle multiple stations in one compact unit. Variable speed drive allows motor and pump to change speeds to deliver up to 40 GPM Maximum and up to 3,000 PSI Maximum. With multiply gun capacities of 4 GPM minimum per each operator. Call for other models with optional flows and pressures. **Note: Requires Factory Training**

MODEL	FLOW RATE	PRESSURE	ELECTRICITY	HP	PART NUMBER	LIST
2020V	20 GPM	2,000 PSI	460V, 3 Phase	30 HP	2020V-000000	\$47,399.00

OPTIONS	
Other Pressure & Flows available	Call Factory

Shown Skid
Model 557S

Model 787AC

SG DIESEL SERIES

Industrial Cold Water High Pressure Washer



Cold Water

Diesel Powered
Engine

Stationary



Portable

Diesel engine drive • Electric Start • Belt drive tri-plex pump • 50 ft Hose • Trigger gun and Wand • Flat Free wheels • 15, 25 & 40 Degree nozzles • Group 24 Battery Required on All Models

The Kohler engine control module (ECM) is an electronic control unit that manages the engine's performance. It monitors various sensors and adjusts fuel injection, ignition timing, and other critical engine functions to optimize fuel efficiency and reduce emissions.

Kubota DSE Module Auto Start/Stop Controller Monitors engine speed, oil pressure, coolant temperature, voltage and current. The modules will give comprehensive engine and alternator protection. This will be indicated on the largest back-lit LCD icon display in its class via an array of warning, electrical trip and shutdown alarms.

MODEL	PERFORMANCE	ENGINE	WT.	PART NUMBER	LIST
537S	5.0 GPM / 3500 PSI	Kohler KDW1003 Diesel (Electric) with ECM	725	537-000000	\$20,829.00
557S	5.0 GPM / 5000 PSI	Kohler KDW1003 Diesel (Electric) with ECM	725	557-000000	\$23,289.00
837S	8.0 GPM / 3000 PSI	Kohler KDW1003 Diesel (Electric) with ECM	750	837-000000	\$21,409.00
787AC	7.0 GPM / 8500 PSI	V2403 Kubota Diesel Engine (Electric) with DSE	925	787AC-000000	\$95,999.00
337S	3.4 GPM / 3000 PSI	Kohler KD440 Diesel (Electric)	435	337SE-000000	\$11,189.00

OPTIONS

Pneumatic Wheels in place of Flat-Free

N/C

Downstream Detergent Injector Assembly (3 to 5 GPM only)

\$69.00



SOFT WASH SERIES

Industrial Cold Water High Pressure Washer



Cold Water



Gas Drive



Stationary

Soft Wash System features chemical resistant wet parts • AR45 Pump • Regulator • Honda GX200 Gasoline Engine • Aluminum Base with rubber feet

MODEL	PERFORMANCE	ENGINE	WT.	PART NUMBER	LIST
113SW	11.4 GPM / 290 PSI	Honda GX200	80	I113SW-000000	\$3,199.00

OPTIONS					
JA6-00408	Spray Gun	\$229.00	K44-300	300' 1/2" ID Hose	\$799.00
REEL-DHRA50450SS	S.S Hose Reel (Holds Up to 450 of 3/8" Hose or 300' of 1/2" Hose)	\$1,399.00			



HHS SERIES

Industrial Cold Water High Pressure Washer



Cold Water



Electric Motor
w/ Belt Drive



Portable

Galvanized frame • Belt drive tri-plex pump • Low pressure chemical • Trigger gun • 18 1/2" wide frame • TEFC Motor • 50 ft. Hose • Gun & Wand • 15, 25, 40 & 65 Degree Nozzle

MODEL	PERFORMANCE	ELECTRICITY	AMP	HP	WT.	PART NUMBER	LIST
HHS440	3.5 GPM / 4000 PSI	230V 1 PH	40	10 HP	310	HHS440-000000	\$7,889.00
HHS530	5.0 GPM / 3000 PSI	230V 1 PH	40	10 HP	310	HHS530-30420	\$8,449.00
HHS720	7.0 GPM / 2000 PSI	230V 1 PH	40	10 HP	325	HHS720-000000	\$9,659.00
HHS1015	9.2 GPM / 1500 PSI	230V 1 PH	40	10 HP	325	HS1015000000	\$10,489.00

OPTIONS

Painted Frame	Call Factory	Stainless Steel Frame	Call Factory
Auto Shutdown or Smart Timer Shutdown (using pressure switch)	\$1,799.00	Remote	\$969.00
		460V 3PH	\$95.00



440J



840J



210J



Cold Water



Electric Motor
Option (210J)



Gas Engine Options
(440J & 840J)



Portable

JETTER SERIES

Industrial Cold Water High Pressure Washer



Trailer w/1035S



Nozzle Trailer Kit

The Jetter Portable Cold Water Series Blast Through Sludge, Soap and Grease Blockages, Power Scrubs Line as Hose is Pulled Back, Easy to use: Thrust propels the hose down the line and simply guide the hose into the drain. Heavy Duty Frame construction • Pneumatic Wheels • External unloader • Jetter Valve • Flow Control Valve • Pressure Gauge • Hose Reel • Sewer Jetter Hose • Sewer Nozzle

Not CARB compliant.

MODEL	PERFORMANCE	HOSE LENGHT	ENGINE	WT.	PART NUMBER	LIST
210J	2.0 GPM / 1500 PSI	50 FT 1/4"	2.3 HP / 115V	310	210J-000000	\$3,609.00
*440J	4.0 GPM / 4000 PSI	100 FT 1/4"	GX390 Honda (Recoil)	310	440J-000000	\$4,669.00
840J	8.0 GPM / 4000 PSI	200 FT 1/2"	GX800 Honda (Electric)	325	840J-000000	\$15,749.00
1035S	12 GPM / 3000 PSI	N/A	35HP Vanguard (Electric)	325	1035S-SDU017	\$13,475.00
160104	Trailer Only for 1035S	300 FT 1/2"	230 Gal Single Axle		160104-5B3826D3	\$20,788.00
Nozzle Trailer Kit	Includes Impactor, De-Icer, Penetrator, Polisher, Flusher and Corneing		For 160104 Trailer only		J06-SSK6R	\$975.00



Model 320EE

Shown with Optional
Pneumatic Wheels



S & SH SERIES ELECTRIC

Industrial Cold Water High Pressure Washer



Cold Water

Electric Motor
w/ Belt Drive

Portable

Belt driven tri-plex pump • Trigger gun • Flat-Free Wheels on all models (S & SH Models)
• 15 ft power cord on 1 Phase • 15, 25 & 40 Degree nozzles • 50 ft. Hose all Models •
320EE (Built on EK Frame) with Pneumatic Wheels

S Series for Water Temperatures up to 160 F *

SH Series for Water Temperatures up to 185 F *

* Hot Water Only Recommended with Smart Timer Option

MODEL	PERFORMANCE	AMP	ELECTRICITY	HP	WT.	PART NUMBER	LIST
320EE	3.0 GPM / 2000 PSI	20	230V 1 PH	4 HP	200	320EE-000000	\$3,639.00
420S	3.7 GPM / 2000 PSI	24	230V 1 PH	5 HP	375	420SA-000000	\$4,489.00
430S	3.8 GPM / 3000 PSI	33	230V 1 PH	8 HP	400	430SA-000000	\$5,469.00
520S	4.8 GPM / 2000 PSI	24.5	230V 1 PH	6 HP	435	520SA-000000	\$5,219.00
530S	5.0 GPM / 3000 PSI	28	230V 1 PH	10 HP	450	530SA-040000	\$6,439.00
530S	5.0 GPM / 3000 PSI	30	230V 3 PH	10 HP	450	530SA-000000	\$6,439.00
540S	5.0 GPM / 4000 PSI	40	230V 3 PH	15 HP	450	540SE-000000	\$8,259.00
830S	8.0 GPM / 3500 PSI	20	230V 3 PH	20 HP	480	830S-000000	\$10,199.00
1030S	10 GPM / 3000 PSI	50	230V 3 PH	20 HP	480	1030S-000000	\$10,719.00
550S	5.0 GPM / 5000 PSI	20	230V 3 PH	20 HP	475	550S-000000	\$11,039.00
420SH	3.6 GPM / 2000 PSI	24	230V 1 PH	5 HP	375	420SC-000000	\$5,689.00
520SH	4.8 GPM / 2000 PSI	33	230V 1 PH	6 HP	435	520SC-000000	\$6,809.00
530SH	4.8 GPM / 3000 PSI	33	230V 1 PH	10 HP	450	5305C-000000	\$10,209.00

OPTIONS

Downstream Detergent Injector Assembly (3 to 5 GPM only)	\$69.00	3 Phase Options, 10, 15, 20 HP	
Stainless Steel Frame	Call Factory	460V, 3 PH	\$259.00
1 Phase Options		Auto Shutdown Timer (Manual On / Auto Off w/ adj. Omron timer)	\$1,299.00
Auto Shutdown Timer (Manual On / Auto Off w/ adj. Omron timer 5, 6 HP)	\$1,229.00	Smart Timer (Auto On / Auto Off 30sec time delay w/ adj. lockout timer) 230V	\$999.00
Auto Shutdown Timer 8 HP	\$1,329.00	Smart Timer (Auto On / Auto Off 30sec time delay w/ adj. lockout timer) 460V	\$999.00
Smart Timer (Auto On / Auto Off 30 sec time delay w/ adj. lockout timer, 230V)		Wireless Remote Control kit - On / Off Motor, Burner & Detergent. Includes Transmitter & Receiver	\$3,019.00
4, 5, 6 HP	\$999.00	Additional Wireless Remote. Transmitter Only	\$609.00
8 HP & 10HP	\$1,099.00	Wall Mount Bracket for Wireless Remote	\$109.00
Smart Timer (Auto On / Auto Off 30sec time delay w/ adj. lockout timer, 460V)	\$999.00	3 Phase Options	
4 Wheel in Place of 2 Wheels	\$329.00	230V, 3 PH (5 HP) upgrade to 6 HP	\$590.00
Pneumatic Wheels in Place of Non-Flat Wheels	N/C	460V, 3 PH (5 HP) upgrade to 6 HP	\$817.00
High Temperature Kit Up to 185° F Included in SH Models		230 V, 3 PH (6 HP)	\$225.00
		460 V, 3 PH (6 HP)	\$228.00
		230 V, 3 PH • 8 HP upgrade to 10 HP 230V 3PH	\$1,013.00
		460 V, 3 PH • 8 HP upgrade to 10 HP 460V 3PH	\$921.00

Need Help?
Contact Our
Customer
Service



800-255-6823



TRAILERS

SINGLE & TANDEM AXLE TRAILERS

Industrial Mobile Cleaning Solutions
Pressure Washer Not Included



Single Axle Trailer w/model 5355EAD



Model 20152C Tandem Axle with Model 5357
Diesel Drive Unit

Detergent
Rack Optional



Tandem Axle Trailer w/model 8305HNL



Single Axle



Tandem Axle



230-460 Gallons
of Water

Single Axle: Tubular Frame Construction with Four Sided Welds for maximum strength • Powder-coated finish • 230 gallon water capacity • Electric brakes • Auto fill water inlet with automatic shut off • 15" wheels • High pressure hose reel with 100 ft of hose • Fill hose reel with 100 ft of 3/4 in. hose • 2" ball receiver standard • Swing up wheel jack • Price includes mounting of any Gasoline Skid Unit. Does not qualify for free freight program. Call for freight quote.

Tandem Axles: Tubular Frame Construction with Four Sided Welds for maximum strength • Powder-coated finish • 330 gallon water capacity on 20152 • 460 gallon water capacity on 20152C • Electric brakes, both axles • Auto fill water inlet with automatic shut off • High pressure hose reel with 100 ft of hose • Fill hose reel with 100 ft of 3/4 in. hose • 15" wheels • 2" ball receiver standard • Swing up wheel jack • Price includes mounting of any GED units. Does not qualify for free freight program. Call for freight quote.

MODEL	AXLE	WATER TANK	DIMENSIONS	WT.	PART NUMBER	LIST
20151	Single	230 Gal	155 L x 72 W	1450	148098-5000E0	\$12,109.00
20152	Tandem	330 Gal	170 L x 72 W	1450	248111-7000F0	\$17,499.00
20152C	Tandem	460 Gal	216 L x 72 W	1100	248129-C00020	\$18,779.00
20152K	Tandem	460 Gal	212 L x 96 W	2200	260142-C00020	\$22,839.00

OPTIONS

Dual signage panels	\$219.00	Lunette eye coupler (replaces standard 2" ball hitch) for Electric Brakes	\$239.00
F03-00519 Rotating hazard roof light	\$699.00	Bull dog hitch (replaces standard 2" ball hitch) for Electric Brakes	\$239.00
F05-00214 12 Volt Battery installed on pressure washer	\$529.00	Metal Tool box (48"L x 16"H x 18"W) 20154-00801	\$1,089.00
20151-00821 Spare wheel, tire, & carrier	\$999.00	Aluminum toolbox (47" x 21" x 19") Z07-00150	\$1,219.00
20151-00909 Detergent container rack (holds four 5-gallon containers)	\$599.00	LED taillights & side marker lights	\$279.00
20153-00811 Low water shut-off	\$439.00	Floor Screen Guard	\$630.00
Surge brakes, single axle for 2" ball (Check local laws for use)	\$1,199.00	Hydrant Air Gap Fill	\$219.00
Surge brakes, dual axle for 2" ball (Check local laws for use)	\$1,889.00	Bypass back to water tank	\$169.00
Surge brakes, single axle with adjustable height Lunette Eye (Check local laws for use)	\$1,849.00	Hose Reel Stacking Bracket	\$359.00
Surge brakes, dual axle with adjustable height Lunette Eye (Check local laws for use)	\$2,389.00	20151-99907 Antifreeze kit, 14 gallon	\$999.00

PT WASH TRAILERS

Industrial Mobile Cleaning Solutions



Single Axle



Hot Water

Tubular steel, four-sided welded construction • Powder-coated finish with 3500 lb leaf spring type axle for superior center of gravity and balance • DOT approved running lights • 2" ball, • Swing up Jack with Wheel • 15" wheels • Oval steel fenders • 200 or 330 gallon water tank with auto fill valve • Price includes mounting of any GED units.

330 Tank Trailer fit only EN Models

MODEL	AXLE	WATER TANK	WT.	PART NUMBER	LIST
20171	Single	200	1450	148088B-M000F0	\$9,519.00
20172	Single	330	1575	148097-P010F4D	\$13,829.00

OPTIONS

Electrics Brakes	\$679.00	50 ft. 3/4" Inlet Hose	\$169.00
Hi Pressure Hose Reel	\$669.00	Polish Aluminum Diamond Rock Guard.	\$569.00
50' 3/8" 4000 PSI Hose (total 100')	\$249.00	Floor Screen Guard	\$569.00
Low Pressure Hose Reel	\$599.00		



Model MC3020HDXXT with 20146 Trailer

MOBILE WASH SYSTEM

Industrial Mobile Cleaning Solutions



Single Axle



Cold Water

Slides into pick-up truck, mini-truck, or van • 100 gallon water capacity • Recoil start • 15, 25 & 40 Degree nozzles • High pressure hose reel with 50ft hose • 3-Way Ball Valve for tank feed or direct feed

Honda GX390 Not CARB compliant.

MODEL	PERFORMANCE	ENGINE	WT.	PART NUMBER	LIST
MC3020HDXX	3.0 GPM / 2000 PSI	Honda GX160 (Recoil, no water tank)	150	I325M-SKC016	\$4,309.00
MC3020HDXXT	3.0 GPM / 2000 PSI	Honda GX160 (Recoil)	250	325M-000000	\$5,399.00
MC4035HDXXT	4.0 GPM / 3500 PSI	Honda GX390 (Recoil)	335	435HM-000000	\$6,479.00

TRAILER OPTION FOR MOBILE WASH SYSTEM

MODEL	DESCRIPTION	WEIGHT	PART NUMBER	PRICE
20146	15" Wheels, 2" Ball Receiver, MC Model to be ordered with Trailer	420 lb	148072-1A00F0	\$6,259.00



HOT WATER MOBILE WASH SYSTEM

Industrial Mobile Cleaning Solutions



Portable

Slides into pick-up truck 5.5' or longer • 200 gallon water capacity • High Pressure Hose Reel with 100ft Hose • Low Pressure Tank Fill Hose with 65' Hose

Frame fits EN Series Hot Water Washer only (not Included in Price)

MODEL	PERFORMANCE	WT.	PART NUMBER	LIST
ENMTS	Fits Pickup Trucks with 5.5' Bed or longer	150	047065-MXAGXE	\$5,799.00

MOBILE WASH VACUUM FILTRATION SYSTEM

Portable or Stationary Filtration System



Tandem Axle



Hot Water



Water Treatment

Excellent for Aquatic Invasive Species Decontamination

MWVFS The Mobile Wash Vacuum Filtration System trailer is a complete modular system for pressure washing and waste water recovery for proper treatment, reuse or discharge to a designated point of choice. Use with VFS-1 vacuum tools and accessories to contain and minimize over spray with zero discharge to storm drain. Features include dependable Vanguard gasoline OHV electric start engine • 12 volt burner for hot water • Belt drive high pressure pump with clutch with manual control switch for high pressure pump on/off feature • 5000 watt generator • VSF-1 vacuum recovery system • 50 ft. vacuum hose with recovery suction head • Tandem axle trailer with dual 230 gallon water tanks • Dual hose reels with 100ft high pressure hose & 100ft. water tank fill hose • 15" wheels • Electric brakes

Call factory for freight quote.

MODEL	CAPACITY	ENGINE	TRAILER	WT.	PART NUMBER	LIST
MWVFS	5 GPM @ 3500 PSI	Vanguard 18 HP (Electric)	Tandem Axle 7000 GVW	3100	MWVFS-000000	\$43,579.00

OPTIONS

8-VFS-99001 Replacement filter kit, contains 8 micro-fiber filters and 2 cartridges filters	\$249.00	Surge brakes, dual axle for 2" ball (Check local laws for use)	\$2,319.00
F03-00519 Rotating hazard roof light	\$679.00	Surge brakes, dual axle with adjustable height Lunette eye (Check local laws for use)	\$229.00
12 volt battery installed on pressure washer	\$519.00	Lunette eye coupler (replaces standard 2" ball hitch) for electric brakes	\$1,059.00
20151-00821 Spare chrome wheel, tire, & carrier	\$999.00	Aluminum storage box (47" x 21" x 19")	\$1,179.00
20151-00909 Detergent container rack (holds four 5-gallon containers)	\$579.00	LED taillights & side marker lights	\$269.00
20153-00811 Low water shut-off	\$429.00	Honda GX630 in place of Vanguard 18 HP (Electric)	\$1,289.00
Dual signage panels	\$219.00		



WATER TREATMENT

MEDIA FILTRATION SYSTEMS

Portable or Stationary Filtration System



Water Treatment



Electric Motor



Stationary

CSF Media Filtration System Series is a low maintenance affordable way of working with water conservation or environmental regulations that limit the discharge of pressure washer or steam cleaner generated waste streams. This system utilizes above ground storage and process tanks for the ease of service & maintenance. The **CSF Series** limits the need for underground containment while limiting the exposure for possible leaks that could potentially contaminate property.

Note: #20 Silica Sand and 3" Chlorine Tablets Not Included

MODEL	FILTRATION	SAND CAPACITY	WT.	PART NUMBER	LIST
CSF-5	5 GPM	10 lbs	1066	8RS6-SR0P1	\$22,689.00
CSF-10	10 GPM	300 lbs	880	8RS12-SF0P4	\$33,409.00

OPTIONS

	Bio-Assist with Dual Mazzei Injector	\$3,307.00	C03-00317	Auto dose pump, 120 volt, wall mount	\$1,099.00
C03-00315	Auto dose pump, 9 volt DC, fits 5 gallon pail	\$1,119.00	B04-000002	Bio-assist 5 gallons pail – microbes B04-000002	\$309.00
8SF-99SPKB	10 GPM Sump Pump Kit (Shop Air Required)	\$4,999.00	8RS6-99002	500 Gallon Tank Complete with Tank Stand & Fittings	\$4,449.00
8RS6-990Z0N2	Ozone Injector	\$4,119.00			

VACUUM FILTRATION SYSTEM

Portable or Stationary Filtration System



Water Treatment



Electric Motor



Stationary, Portable with Wheel Kit or Skid Mount

Discharge point of choice • Multiple phase separation • Small compact design • Simple to operate • Easy to maintain • Minimal operational costs • Minimal disposal costs • 120 volt, low amperage • On demand system • High volume performance • Reduces 99% of free petroleum hydrocarbons load • Reduces totally suspended solids load down to 10 micron • Includes 2" 50ft vacuum hose with 14" adjustable suction head.

Note: Units are shipped with one set of replacement filters

MODEL	CAPACITY	WT.	PART NUMBER	LIST
VFS	5 GPM / Single Vacuum	330	8-VFS2-1B0000	\$7,449.00
VFS	5 GPM / Dual Vacuum	335	8-VFS2-SCN061	\$7,739.00
VFS	5 GPM / Less Vacuum	325	8-VFS2-SHN007	\$7,119.00
VFS	8 GPM / Dual Vacuum / Dual Pump out	340	8-VFS2-SFS039	\$8,319.00
VFS	12 Volt Pump Out 115 Vacuum	330	8-VFS2-SJN110	\$7,589.00

OPTIONS

8-VFS-99168	Wheel kit with hose rack	\$1,199.00
8-VFS-99001	Replacement filter kit, contains 8 micro-fiber filters and 2 cartridges filters.	\$259.00
8-VFS-99002	Kit, Single Vacuum to Dual Vacuum	\$399.00

VFS-1 & VACG VACCUUM TOOLS & ACCESORIES

Containment tools and accessories make mobile washing containment simple and easy to use and stay compliant with EPA's Clean Water Act.

VAC-11195005	2" vacuum jumper hose x 5' long for VACG to VFS-1	\$79.00
VAC-11195010	Vacuum hose, 2" x 50' reinforced with end fittings	\$459.00
VAC-AH44	Vacuum hose 2" hose connector	\$33.00
VAC-AH48	Vacuum hose 2" x 1-1/2" adapter coupler	\$29.00
VB20-UR1	20 Ft. vacuum boom with 2" fitting (no vacuum included)	\$7,249.00
VB40-VR1	40 Ft. vacuum boom with 2" fitting (no vacuum included)	\$13,779.00
ECS-00736-01	Vacuum pick up head, 14" diameter w/ 1.5" connection	\$259.00
K81-000000	Vacuum hose, 1.5" x 50' reinforced with end fittings	\$399.00
VAC-AH49	Vacuum hose 2" hose connector	\$26.00
Z01-00214	Vacuum sight tube 1-1/2"	\$89.00
VAC-29200001	150' x 2" vacuum hose reel	\$1,629.00
SC-FLAER200	Vacuum surface cleaner, 8", w/ 1-2" port, stainless steel, hand held	\$1,699.00
SC-FLAH520	Vacuum surface cleaner, 21", w/ 1-2" port, stainless steel w/ wheel	\$4,149.00
SC-FLAH750	Vacuum surface cleaner, 30", w/ 2-2" port, stainless steel w/wheel	\$5,189.00
SC-FLAER300	Vacuum surface cleaner, 12", w/ 1-2" port, stainless steel w/wheel	\$1,739.00
VAC-AH150	2" stainless steel vacuum Y for 2 port surface cleaner	\$169.00
ECS- BWF60	Berm, water filled 60" length	\$279.00
ECS- BWF120	Berm, water filled 120" length	\$519.00
ECS- BWF180	Berm, water filled 180" length	\$969.00
ECS- BWF240	Berm, water filled 240" length	\$1,069.00
ECS- BWF300	Berm, water filled 300" length	\$1,339.00
ECS-WM120X180	Wash mat, 22 oz w/ 4" foam berm w/ float entry 120" x 180"	\$2,849.00
ECS-WM120X240	Wash mat, 22 oz w/ 4" foam berm w/ float entry 120" x 240"	\$3,349.00
ECS-WM120X300	Wash mat, 22 oz w/ 4" foam berm w/ float entry 120" x 300"	\$4,189.00
ECS-WM168X360	Wash mat, 22 oz w/ 4" foam berm w/ float entry 168" x 360"	\$5,799.00
ECS-WM168X540	Wash mat, 22 oz w/ 4" foam berm w/ float entry 168" x 540"	\$6,869.00
ECS-WM168X900	Wash mat, 22 oz w/ 4" foam berm w/ float entry 168" x 900"	\$9,689.00
ECS-WM216X360	Wash mat, 22 oz w/ 4" foam berm w/ float entry 216" x 360"	\$10,199.00
ECS-GT120X180	PVC ground tarp, 18 oz 120" x 180" installed under mat	\$919.00
ECS-GT120X240	PVC ground tarp, 18 oz 120" x 240" installed under mat	\$1,089.00
ECS-GT120X300	PVC ground tarp, 18 oz 120" x 300" installed under mat	\$1,529.00
ECS-GT168X360	PVC ground tarp, 18 oz 168" x 360" installed under mat	\$2,219.00
ECS-GT168X540	PVC ground tarp, 18 oz 168" x 540" installed under mat	\$3,239.00
ECS-GT168X900	PVC ground tarp, 18 oz 168" x 900" installed under mat	\$4,769.00
ECS-TR30X240	Track runner, 18 oz 30" x 240" 2-required installed on top of mat	\$469.00
ECS-TR30X300	Track runner, 18 oz 30" x 300" 2-required installed on top of mat	\$559.00
ECS-TR30X360	Track runner, 18 oz 30" x 360" 2-required installed on top of mat	\$769.00
ECS-TR30X540	Track runner, 18 oz 30" x 540" 2-required installed on top of mat	\$1,129.00
ECS-TR30X900	Track runner, 18 oz 30" x 900" 2-required installed on top of mat	\$1,629.00
ECS-TR120X384	Track runner, 18 oz 120" x 384" 1-required installed on top of mat	\$1,899.00
REEL- P2396H	Reel, mat 23" diameter x 96" length, manual wind	\$7,459.00
ECS-SDC36x36	Storm drain cover, water filled 36" x 36", 18 oz	\$469.00
ECS-SDC48x48	Storm drain cover, water filled 48" x 48", 18 oz	\$649.00
ECS-SDC60x60	Storm drain cover, water filled 60" x 60", 18 oz	\$739.00
ECS-SDC60x96	Storm drain cover, water filled 60" x 96", 18 oz	\$979.00



Vacuum Hose



8" Vacuum Surface Cleaner



Vacuum Hose Reel



Vacuum Boom



21" Vacuum Surface Cleaner



Wash Matt, 22 oz.



Storm Drain Cover



Water Filled Berm

VACUUM BLOWER SYSTEM

Portable or Stationary Filtration System



Water
Treatment



Gas Engine
with Electric Start



Stationary

Dependable Vanguard Engines with High Efficiency Sutorbilt Vacuum Pump with expanded cleanance for longer life & Less maintenance • Captures up to 98% of waste water • Small compact design • Simple to operate • Easy to maintain • Connect to VSF-2 for High volume performance filtering

MODEL	CAPACITY	HG LIFT	ENGINE	WT	PART NUMBER	LIST
VACGD18	Up to 225 CFM	10" Hg	18 HP Vanguard	400	8-VFS2-1B0000	\$12,709.00
VACGD23	Up to 350 CFM	10" Hg	23 HP Vanguard	500	8-VFS2-SCN061	\$14,839.00
VACGD35	Up to 495 CFM	14" Hg	35 HP Vanguard	440	8-VFS2-SHN007	\$19,959.00

OPTIONS						
4-99171	13 Gallon Fuel Tank	\$559.00	SC-FLAH750	30" Vacuum Surface Cleaner		\$5,329.00
VFS	VFS Filtration Separation System 8-VFS-2	\$7,619.00	ECS-BWF60	Water Fill Berm 60"		\$279.00
VAC-11195010	50' 2" Vacuum Hose	\$469.00		Honda Engine in Place of Vanguard		Call Factory
VAC-11195015	100' 2" Vacuum Hose	\$789.00				
VB20-URI	20' Vacuum Boom	\$7,249.00				



OIL/SOLID COALESCING SYSTEMS

Stationary Filtration System



Water
Treatment



Stationary

Oil/solid Coalescing System is a versatile gravity flow design with no power required. Flow rate ranging from zero to 24 GPM. This design easily separates free non-emulsified oil and solids from most industrial pressure washing and steam cleaning applications. C12 standard with 195 gallon polypropylene molded tank with 7 day timer oil simmer and C24 standard with 430 gallon stainless steel tank with oil skimmer tube

MODEL	FILTRATION	WT	PART NUMBER	LIST
C-12 Poly	12 GPM	550	8RS12-99801	\$11,939.00

OPTIONS			
8SF-99SPKB	10 GPM Sump Pump Kit, Shop Air Required		\$4,999.00
8RS6-99OZON2	Ozone Injector		\$4,119.00

EVAPORATOR

Stationary Evaporator System



Water Treatment



Gas (LP & NG)



Stationary

The Evaporator is a highly efficient way to eliminate small volumes of generated wash water on demand. This system can receive waste streams from any pressurized source. Works as a primary post treatment with a maximum of 480 gallons per day with aqueous based parts washers, pressure washers, steam cleaners and waste water treatment systems. • 18 gallons per hour evaporation max. rate • 115V burner • Natural gas or LP fired • Defoamer pump standard

MODEL		BTU	WT.	PART NUMBER	LIST
15/20	NATURAL GAS	400,000 maximum	1370	1520D-000000	\$25,869.00
15/20	LP	400,000 maximum	1370	1520D-500000	\$25,869.00

OPTIONS					
1520B-99002	Oil Skimmer kit	\$3,789.00	8SF-99SPKB	4" Drain Port	\$539.00
	Stainless Steel Construction	Call Factory		10 GPM Sump Pump Kit, Shop Air Required	\$4,999.00
	Stainless Steel Insert	Call Factory			



SPACE HEATERS



INDUSTRIAL SPACE HEATERS

Industrial Space Heaters



Space
Heater



Oil
Diesel/Kerosene



Electric Motor



Portable

Electric • Oil Fired • Portable • Instantaneous heat • Non-vented • 110 volt electricity • Large 16.5 gallon fuel tank • Stainless Steel Combustion Chamber • High Limit Switch • High Capacity Fans • Adjustable Thermostat • Two Flat Free Wheels with Front Swivel Caster

MODEL	PERFORMANCE	ELECTRICITY	HP	WT.	PART NUMBER	LIST
210	210,000 BTU'S	115V, 1 PH / 10 Amp	1/2 HP	250	210-200D0A	\$4,999.00